

EIF4G1 Rabbit Polyclonal Antibody



CAB7552

Product Information

Size:

20uL, 50uL, 100uL, 200uL

Observed MW:

230kDa

Calculated MW:

154kDa/158kDa/166kDa/171kDa/175kDa/176kDa

Applications:

WB IHC IF

Reactivity:

Human

Antibody Information

Recommended dilutions:

WB 1:500 - 1:2000 IHC 1:50
- 1:200 IF 1:50 - 1:200

Source:

Rabbit

Isotype:

IgG

Purification:

Affinity purification

Protein Background

The protein encoded by this gene is a component of the multi-subunit protein complex EIF4F. This complex facilitates the recruitment of mRNA to the ribosome, which is a rate-limiting step during the initiation phase of protein synthesis. The recognition of the mRNA cap and the ATP-dependent unwinding of 5'-terminal secondary structure is catalyzed by factors in this complex. The subunit encoded by this gene is a large scaffolding protein that contains binding sites for other members of the EIF4F complex. A domain at its N-terminus can also interact with the poly(A)-binding protein, which may mediate the circularization of mRNA during translation. Alternative splicing results in multiple transcript variants, some of which are derived from alternative promoter usage.

Immunogen information

Gene ID:

1981

Uniprot

Q04637

Synonyms:

EIF4G1; EIF-4G1; EIF4F; EIF4G; EIF4GI; P220; PARK18

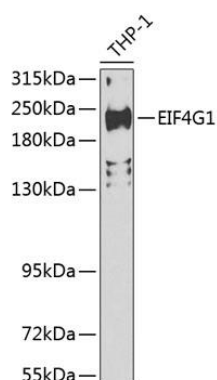
Immunogen:

A synthetic peptide corresponding to a sequence within amino acids 400-500 of human EIF4G1 (NP_886553.3).

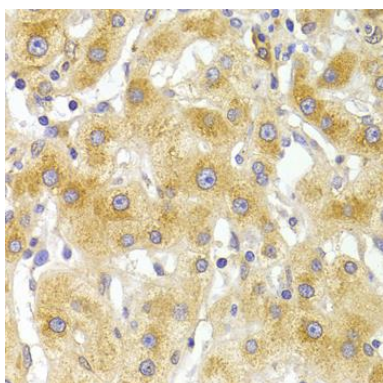
Storage:

Store at -20°C. Avoid freeze / thaw cycles. Buffer: PBS with 0.02% sodium azide, 50% glycerol, pH7.3.

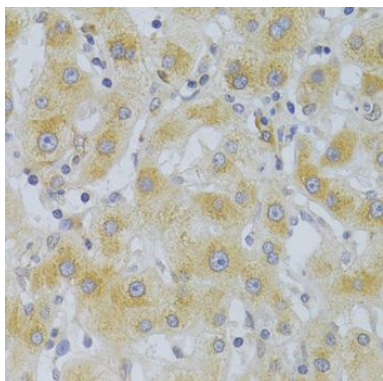
Product Images



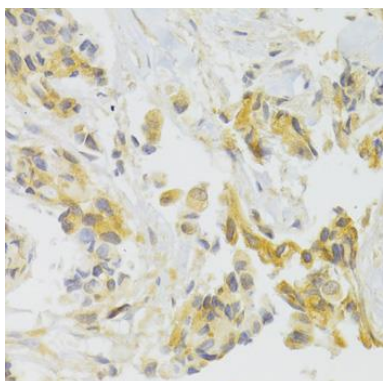
Western blot analysis of extracts of THP-1 cells, using EIF4G1 Antibody (CAB7552) at 1:200 dilution. Secondary antibody: HRP Goat Anti-Rabbit IgG (H+L) (CABS014) at 1:10000 dilution. Lysates/proteins: 25ug per lane. Blocking buffer: 3% nonfat dry milk in TBST. Detection: ECL Basic Kit (CABM00020). Exposure time: 90s.



Immunohistochemistry of paraffin-embedded human liver damage using EIF4G1 Antibody (CAB7552) at dilution of 1:100 (40x lens).



Immunohistochemistry of paraffin-embedded human liver cancer using EIF4G1 Antibody (CAB7552) at dilution of 1:100 (40x lens).



Immunohistochemistry of paraffin-embedded human breast cancer using EIF4G1 Antibody (CAB7552) at dilution of 1:100 (40x lens).