

EPAS1/HIF2Alpha Rabbit Polyclonal Antibody



CAB7553

Product Information

Size:

20uL, 50uL, 100uL, 200uL

Observed MW:

120kDa

Calculated MW:

96kDa

Applications:

WB IHC IF

Reactivity:

Human, Mouse, Rat

Protein Background

This gene encodes a transcription factor involved in the induction of genes regulated by oxygen, which is induced as oxygen levels fall. The encoded protein contains a basic-helix-loop-helix domain protein dimerization domain as well as a domain found in proteins in signal transduction pathways which respond to oxygen levels. Mutations in this gene are associated with erythrocytosis familial type 4.

Immunogen information

Gene ID:

2034

Uniprot

Q99814

Synonyms:

EPAS1; ECYT4; HIF2A; HLF; MOP2; PASD2; bHLHe73

Antibody Information

Recommended dilutions:

WB 1:500 - 1:2000 IHC 1:50
- 1:200 IF 1:50 - 1:100

Source:

Rabbit

Isotype:

IgG

Purification:

Affinity purification

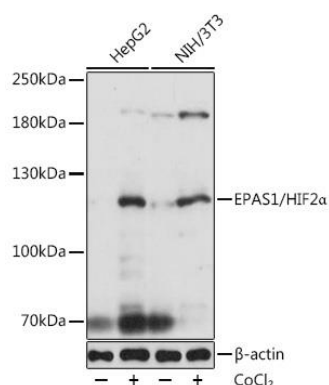
Immunogen:

Recombinant fusion protein containing a sequence corresponding to amino acids 588-870 of human EPAS1/HIF2Alpha (NP_001421.2).

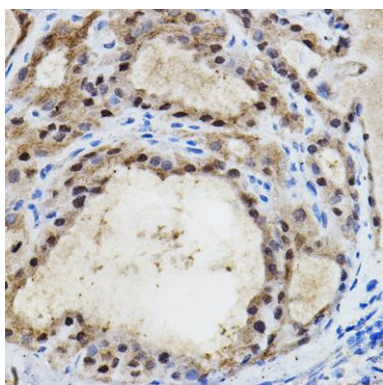
Storage:

Store at -20°C. Avoid freeze / thaw cycles. Buffer: PBS with 0.02% sodium azide, 50% glycerol, pH7.3.

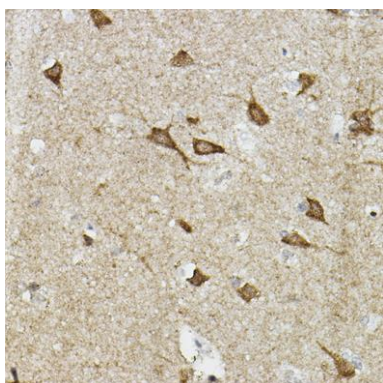
Product Images



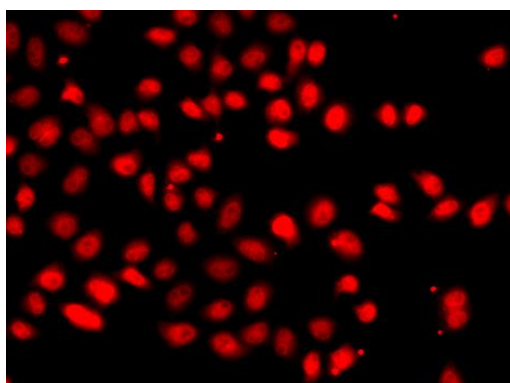
Western blot analysis of extracts of various cell lines, using EPAS1/HIF2alpha antibody (CAB7553) at 1:1000 dilution. Secondary antibody: HRP Goat Anti-Rabbit IgG (H+L) (CABS014) at 1:10000 dilution. Lysates/proteins: 25ug per lane. Blocking buffer: 3% nonfat dry milk in TBST. Detection: ECL Basic Kit (CABM00020). Exposure time: 1s.



Immunohistochemistry of paraffin-embedded human thyroid cancer using EPAS1/HIF2a Rabbit pAb (CAB7553) at dilution of 1:100 (40x lens).



Immunohistochemistry of paraffin-embedded human brain using EPAS1/HIF2a Rabbit pAb (CAB7553) at dilution of 1:100 (40x lens).



Immunofluorescence analysis of A549 cells using EPAS1/HIF2a antibody (CAB7553).