

MYH7 Rabbit Polyclonal Antibody



CAB7564

Product Information

Size:

20uL, 50uL, 100uL, 200uL

Observed MW:

220KDa

Calculated MW:

223kDa

Applications:

WB IHC IF

Reactivity:

Mouse, Rat

Antibody Information

Recommended dilutions:

WB 1:500 - 1:2000 IHC 1:50
- 1:100 IF 1:50 - 1:200

Source:

Rabbit

Isotype:

IgG

Purification:

Affinity purification

Protein Background

Muscle myosin is a hexameric protein containing 2 heavy chain subunits, 2 alkali light chain subunits, and 2 regulatory light chain subunits. This gene encodes the beta (or slow) heavy chain subunit of cardiac myosin. It is expressed predominantly in normal human ventricle. It is also expressed in skeletal muscle tissues rich in slow-twitch type I muscle fibers. Changes in the relative abundance of this protein and the alpha (or fast) heavy subunit of cardiac myosin correlate with the contractile velocity of cardiac muscle. Its expression is also altered during thyroid hormone depletion and hemodynamic overloading. Mutations in this gene are associated with familial hypertrophic cardiomyopathy, myosin storage myopathy, dilated cardiomyopathy, and Laing early-onset distal myopathy.

Immunogen information

Gene ID:

4625

Uniprot

P12883

Synonyms:

MYH7; CMD1S; CMH1; MPD1; MYHCB; SPMD; SPMM; myosin-7;
MYH7

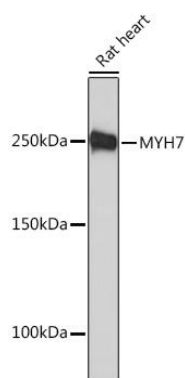
Immunogen:

Recombinant fusion protein containing a sequence corresponding to amino acids 1766-1935 of human MYH7 (NP_000248.2).

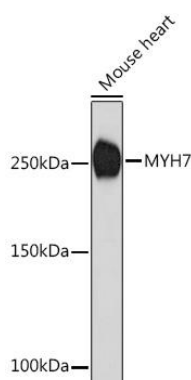
Storage:

Store at -20°C. Avoid freeze / thaw cycles. Buffer: PBS with 0.02% sodium azide, 50% glycerol, pH7.3.

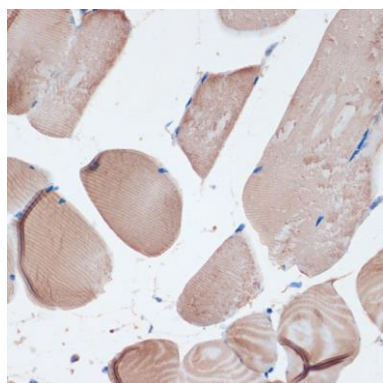
Product Images



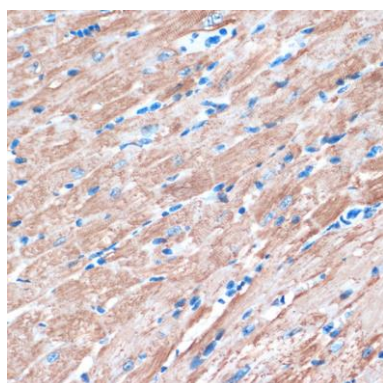
Western blot analysis of extracts of Rat heart, using MYH7 Rabbit pAb (CAB7564) at 1:1000 dilution. Secondary antibody: HRP Goat Anti-Rabbit IgG (H+L) (CABS014) at 1:10000 dilution. Lysates/proteins: 25ug per lane. Blocking buffer: 3% nonfat dry milk in TBST. Detection: ECL Basic Kit (CABM00020). Exposure time: 90s.



Western blot analysis of extracts of Mouse heart, using MYH7 Rabbit pAb (CAB7564) at 1:1000 dilution. Secondary antibody: HRP Goat Anti-Rabbit IgG (H+L) (CABS014) at 1:10000 dilution. Lysates/proteins: 25ug per lane. Blocking buffer: 3% nonfat dry milk in TBST. Detection: ECL Basic Kit (CABM00020). Exposure time: 180s.



Immunohistochemistry of paraffin-embedded mouse skeletal muscle using MYH7 antibody (CAB7564) at dilution of 1:100 (40x lens).



Immunohistochemistry of paraffin-embedded mouse heart using MYH7 antibody (CAB7564) at dilution of 1:100 (40x lens).