

# CCL3 Rabbit Polyclonal Antibody



CAB7568

---

## Product Information

### Size:

20uL, 50uL, 100uL, 200uL

### Observed MW:

11KDa

### Calculated MW:

10kDa

### Applications:

WB IHC IF

### Reactivity:

Human, Mouse, Rat

## Protein Background

This locus represents a small inducible cytokine. The encoded protein, also known as macrophage inflammatory protein 1 alpha, plays a role in inflammatory responses through binding to the receptors CCR1, CCR4 and CCR5. Polymorphisms at this locus may be associated with both resistance and susceptibility to infection by human immunodeficiency virus type 1.

## Immunogen information

### Gene ID:

6348

### Uniprot

P10147

### Synonyms:

CCL3; G0S19-1; LD78ALPHA; MIP-1-alpha; MIP1A; SCYA3

## Antibody Information

### Recommended dilutions:

WB 1:500 - 1:2000 IHC 1:50  
- 1:100 IF 1:50 - 1:200

### Source:

Rabbit

### Isotype:

IgG

### Purification:

Affinity purification

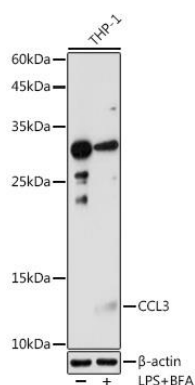
### Immunogen:

Recombinant fusion protein containing a sequence corresponding to amino acids 24-92 of human CCL3 (NP\_002974.1).

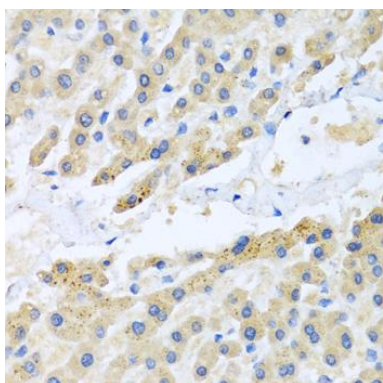
### Storage:

Store at -20°C. Avoid freeze / thaw cycles. Buffer: PBS with 0.02% sodium azide, 50% glycerol, pH7.3.

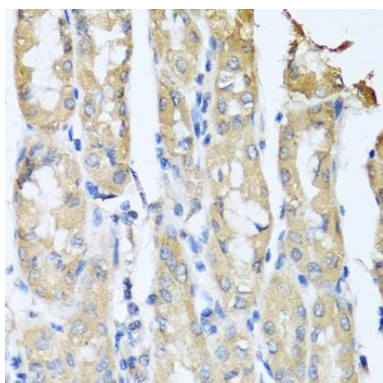
## Product Images



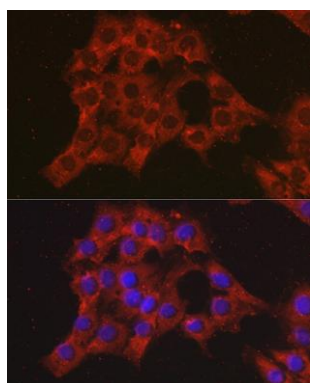
Western blot analysis of extracts of THP-1 cells, using CCL3 antibody (CAB7568) at 1:1000 dilution. THP-1 cells were treated by LPS for 6 hours and Brefeldin A for 3 hours of stimulation. Secondary antibody: HRP Goat Anti-Rabbit IgG (H+L) (CABS014) at 1:10000 dilution. Lysates/proteins: 25ug per lane. Blocking buffer: 3% nonfat dry milk in TBST. Detection: ECL Enhanced Kit (CABM00021). Exposure time: 180s.



Immunohistochemistry of paraffin-embedded human liver using CCL3 antibody (CAB7568) at dilution of 1:100 (40x lens).



Immunohistochemistry of paraffin-embedded human gastric cancer using CCL3 antibody (CAB7568) at dilution of 1:100 (40x lens).



Immunofluorescence analysis of C6 cells using CCL3 Rabbit pAb (CAB7568) at dilution of 1:100 (40x lens). Blue: DAPI for nuclear staining.