

SGK3 Rabbit Polyclonal Antibody



CAB7586

Product Information

Size:

20uL, 50uL, 100uL, 200uL

Observed MW:

57kDa

Calculated MW:

53kDa/57kDa

Applications:

WB

Reactivity:

Human, Mouse

Protein Background

This gene is a member of the Ser/Thr protein kinase family and encodes a phosphoprotein with a PX (phox homology) domain. The protein phosphorylates several target proteins and has a role in neutral amino acid transport and activation of potassium and chloride channels. Alternate transcriptional splice variants, encoding different isoforms, have been characterized.

Immunogen information

Gene ID:

23678

Uniprot

Q96BR1

Synonyms:

SGK3; CISK; SGK2; SGKL

Antibody Information

Recommended dilutions:

WB 1:500 - 1:2000

Source:

Rabbit

Isotype:

IgG

Purification:

Affinity purification

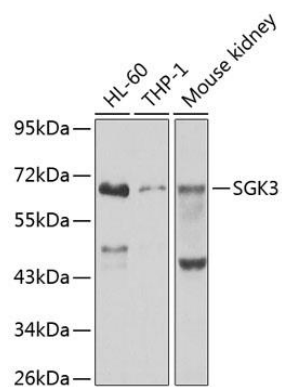
Immunogen:

Recombinant fusion protein containing a sequence corresponding to amino acids 1-150 of human SGK3 (NP_037389.4).

Storage:

Store at -20°C. Avoid freeze / thaw cycles. Buffer: PBS with 0.02% sodium azide, 50% glycerol, pH7.3.

Product Images



Western blot analysis of extracts of various cell lines, using SGK3 antibody (CAB7586) at 1:1000 dilution. Secondary antibody: HRP Goat Anti-Rabbit IgG (H+L) (CABS014) at 1:10000 dilution. Lysates/proteins: 25ug per lane. Blocking buffer: 3% nonfat dry milk in TBST. Detection: ECL Enhanced Kit (CABM00021). Exposure time: 10s.