

SH3GLB2 Rabbit Polyclonal Antibody



CAB7599

Product Information

Size:

20uL, 50uL, 100uL, 200uL

Observed MW:

44kDa

Calculated MW:

43kDa/44kDa

Applications:

WB IHC

Reactivity:

Human

Antibody Information

Recommended dilutions:

WB 1:500 - 1:2000 IHC 1:50
- 1:200

Source:

Rabbit

Isotype:

IgG

Purification:

Affinity purification

Protein Background

Immunogen information

Gene ID:

56904

Uniprot

Q9NR46

Synonyms:

SH3GLB2; PP6569; PP9455; RRIG1

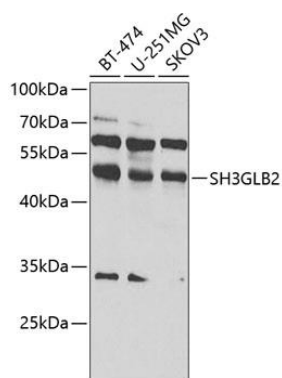
Immunogen:

Recombinant fusion protein containing a sequence corresponding to amino acids 1-250 of human SH3GLB2 (NP_064530.1).

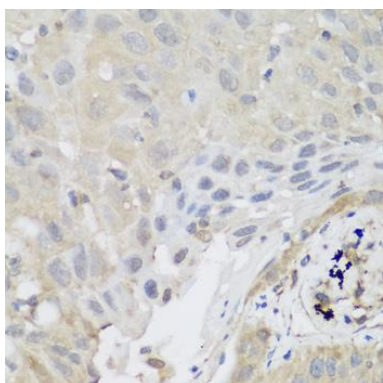
Storage:

Store at -20°C. Avoid freeze / thaw cycles. Buffer: PBS with 0.02% sodium azide, 50% glycerol, pH7.3.

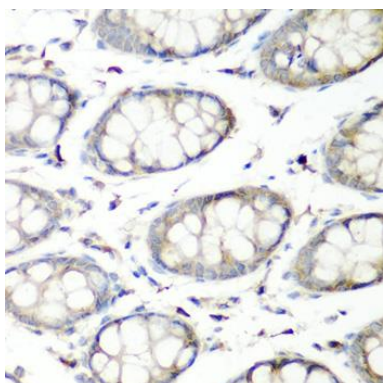
Product Images



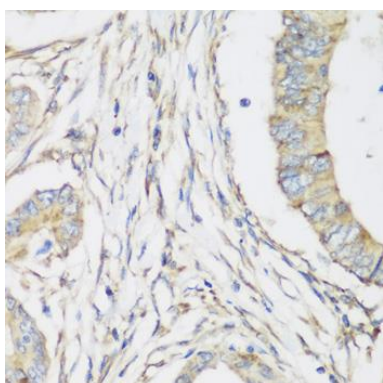
Western blot analysis of extracts of various cell lines, using SH3GLB2 antibody (CAB7599) at 1:1000 dilution. Secondary antibody: HRP Goat Anti-Rabbit IgG (H+L) (CABS014) at 1:10000 dilution. Lysates/proteins: 25ug per lane. Blocking buffer: 3% nonfat dry milk in TBST. Detection: ECL Basic Kit (CABM00020). Exposure time: 30s.



Immunohistochemistry of paraffin-embedded human lung cancer using SH3GLB2 antibody (CAB7599) at dilution of 1:200 (40x lens).



Immunohistochemistry of paraffin-embedded human colon using SH3GLB2 antibody (CAB7599) at dilution of 1:200 (40x lens).



Immunohistochemistry of paraffin-embedded human colon carcinoma using SH3GLB2 antibody (CAB7599) at dilution of 1:200 (40x lens).