

# TET3 Rabbit Polyclonal Antibody



CAB7612

---

## Product Information

### Size:

20uL, 50uL, 100uL, 200uL

### Observed MW:

200kDa

### Calculated MW:

77kDa/166kDa/179kDa

### Applications:

WB IF

### Reactivity:

Human, Mouse, Rat

## Antibody Information

### Recommended dilutions:

WB 1:500 - 1:2000 IF 1:50 - 1:200

### Source:

Rabbit

### Isotype:

IgG

### Purification:

Affinity purification

## Protein Background

### Immunogen information

#### Gene ID:

200424

#### Uniprot

O43151

#### Synonyms:

TET3; hCG\_40738; TET3

#### Immunogen:

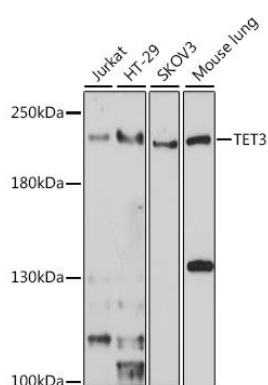
Recombinant fusion protein containing a sequence corresponding to amino acids 1525-1660 of human TET3 (NP\_001274420.1).

#### Storage:

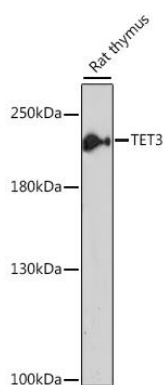
Store at -20°C. Avoid freeze / thaw cycles. Buffer: PBS with 0.02% sodium azide, 50% glycerol, pH7.3.

## Product Images

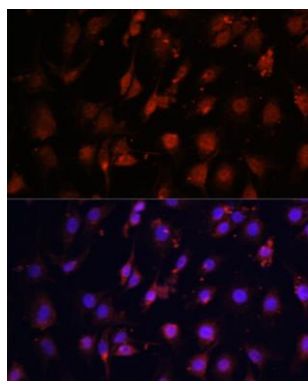
---



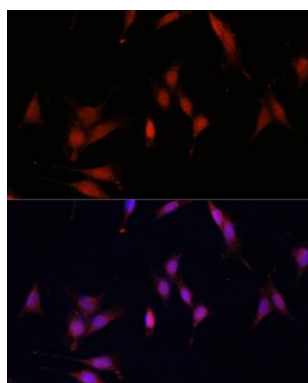
Western blot analysis of extracts of various cell lines, using TET3 antibody (CAB7612) at 1:1000 dilution. Secondary antibody: HRP Goat Anti-Rabbit IgG (H+L) (CABS014) at 1:10000 dilution. Lysates/proteins: 25ug per lane. Blocking buffer: 3% nonfat dry milk in TBST. Detection: ECL Basic Kit (CABM00020). Exposure time: 30s.



Western blot analysis of extracts of rat thymus, using TET3 antibody (CAB7612) at 1:1000 dilution. Secondary antibody: HRP Goat Anti-Rabbit IgG (H+L) (CABS014) at 1:10000 dilution. Lysates/proteins: 25ug per lane. Blocking buffer: 3% nonfat dry milk in TBST. Detection: ECL Basic Kit (CABM00020). Exposure time: 5min.



Immunofluorescence analysis of C6 cells using TET3 antibody (CAB7612) at dilution of 1:100. Blue: DAPI for nuclear staining.



Immunofluorescence analysis of NIH/3T3 using TET3 antibody (CAB7612) at dilution of 1:100. Blue: DAPI for nuclear staining.