

KIF6 Rabbit Polyclonal Antibody



CAB7614

Product Information

Size:

20uL, 50uL, 100uL, 200uL

Observed MW:

93kDa

Calculated MW:

19kDa/30kDa/90kDa/92kDa

Applications:

WB

Reactivity:

Human, Mouse

Antibody Information

Recommended dilutions:

WB 1:500 - 1:2000

Source:

Rabbit

Isotype:

IgG

Purification:

Affinity purification

Protein Background

Immunogen information

Gene ID:

221458

Uniprot

Q6ZMV9

Synonyms:

KIF6; C6orf102; dJ1043E3.1; dJ137F1.4; dJ188D3.1

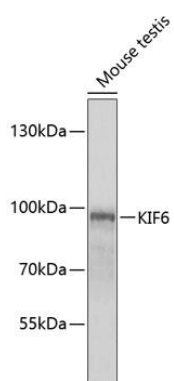
Immunogen:

Recombinant fusion protein containing a sequence corresponding to amino acids 565-814 of human KIF6 (NP_659464.3).

Storage:

Store at -20°C. Avoid freeze / thaw cycles. Buffer: PBS with 0.02% sodium azide, 50% glycerol, pH7.3.

Product Images



Western blot analysis of extracts of mouse testis, using KIF6 antibody (CAB7614) at 1:1000 dilution. Secondary antibody: HRP Goat Anti-Rabbit IgG (H+L) (CABS014) at 1:10000 dilution. Lysates/proteins: 25ug per lane. Blocking buffer: 3% nonfat dry milk in TBST. Detection: ECL Basic Kit (CABM00020). Exposure time: 90s.