

POC1B Rabbit Polyclonal Antibody



CAB7616

Product Information

Size:

20uL, 50uL, 100uL, 200uL

Observed MW:

54kDa

Calculated MW:

49kDa/53kDa

Applications:

WB

Reactivity:

Human

Protein Background

POC1 proteins contain an N-terminal WD40 domain and a C-terminal coiled coil domain and are part of centrosomes. They play an important role in basal body and cilia formation. This gene encodes one of the two POC1 proteins found in humans. Mutation in this gene result in autosomal-recessive cone-rod dystrophy. Alternative splicing results in multiple transcript variants.

Immunogen information

Gene ID:

282809

Uniprot

Q8TC44

Synonyms:

POC1B; CORD20; PIX1; TUWD12; WDR51B

Antibody Information

Recommended dilutions:

WB 1:500 - 1:2000

Source:

Rabbit

Isotype:

IgG

Purification:

Affinity purification

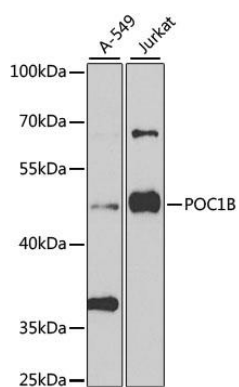
Immunogen:

Recombinant fusion protein containing a sequence corresponding to amino acids 299-478 of human POC1B (NP_758440.1).

Storage:

Store at -20°C. Avoid freeze / thaw cycles. Buffer: PBS with 0.02% sodium azide, 50% glycerol, pH7.3.

Product Images



Western blot analysis of extracts of various cell lines, using POC1B antibody (CAB7616) at 1:1000 dilution. Secondary antibody: HRP Goat Anti-Rabbit IgG (H+L) (CABS014) at 1:10000 dilution. Lysates/proteins: 25ug per lane. Blocking buffer: 3% nonfat dry milk in TBST. Detection: ECL Basic Kit (CABM00020). Exposure time: 90s.