

# GLUD1 Rabbit Polyclonal Antibody



CAB7631

## Product Information

### Size:

20uL, 50uL, 100uL, 200uL

### Observed MW:

50kDa

### Calculated MW:

42kDa/46kDa/61kDa

### Applications:

WB IHC IF

### Reactivity:

Human, Mouse, Rat

## Antibody Information

### Recommended dilutions:

WB 1:500 - 1:2000 IHC

1:100 - 1:200 IF 1:50 -

1:200

### Source:

Rabbit

### Isotype:

IgG

### Purification:

Affinity purification

## Protein Background

This gene encodes glutamate dehydrogenase, which is a mitochondrial matrix enzyme that catalyzes the oxidative deamination of glutamate to alpha-ketoglutarate and ammonia. This enzyme has an important role in regulating amino acid-induced insulin secretion. It is allosterically activated by ADP and inhibited by GTP and ATP. Activating mutations in this gene are a common cause of congenital hyperinsulinism. Alternative splicing of this gene results in multiple transcript variants. The related glutamate dehydrogenase 2 gene on the human X-chromosome originated from this gene via retrotransposition and encodes a soluble form of glutamate dehydrogenase. Related pseudogenes have been identified on chromosomes 10, 18 and X.

## Immunogen information

### Gene ID:

2746

### Uniprot

P00367

### Synonyms:

GLUD1; GDH; GDH1; GLUD

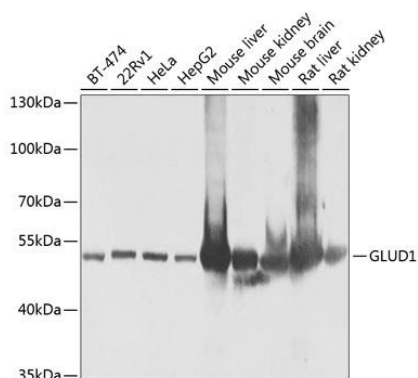
### Immunogen:

Recombinant fusion protein containing a sequence corresponding to amino acids 54-240 of human GLUD1 (NP\_005262.1).

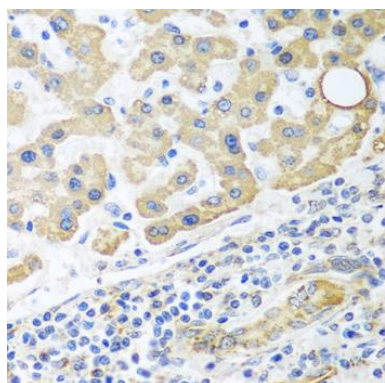
### Storage:

Store at -20°C. Avoid freeze / thaw cycles. Buffer: PBS with 0.02% sodium azide, 50% glycerol, pH7.3.

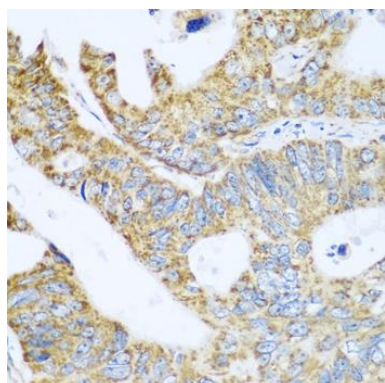
## Product Images



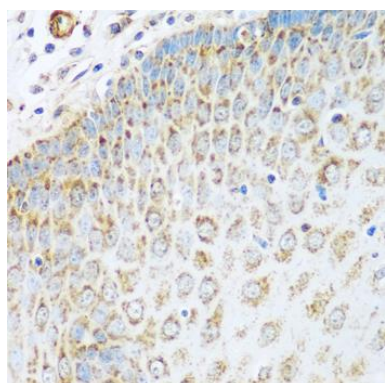
Western blot analysis of extracts of various cell lines, using GLUD1 antibody (CAB7631) at 1:1000 dilution. Secondary antibody: HRP Goat Anti-Rabbit IgG (H+L) (CABS014) at 1:10000 dilution. Lysates/proteins: 25ug per lane. Blocking buffer: 3% nonfat dry milk in TBST. Detection: ECL Basic Kit (CABM00020). Exposure time: 20s.



Immunohistochemistry of paraffin-embedded human liver cancer using GLUD1 antibody (CAB7631) at dilution of 1:100 (40x lens).



Immunohistochemistry of paraffin-embedded human colon carcinoma using GLUD1 antibody (CAB7631) at dilution of 1:100 (40x lens).



Immunohistochemistry of paraffin-embedded human esophagus using GLUD1 antibody (CAB7631) at dilution of 1:100 (40x lens).