

Cyclin A2 Rabbit Polyclonal Antibody



CAB7632

Product Information

Size:

20uL, 50uL, 100uL, 200uL

Observed MW:

55kDa

Calculated MW:

48kDa

Applications:

WB IHC IF

Reactivity:

Human, Mouse, Rat

Antibody Information

Recommended dilutions:

WB 1:500 - 1:2000 IHC 1:50
- 1:200 IF 1:50 - 1:200

Source:

Rabbit

Isotype:

IgG

Purification:

Affinity purification

Protein Background

The protein encoded by this gene belongs to the highly conserved cyclin family, whose members are characterized by a dramatic periodicity in protein abundance through the cell cycle. Cyclins function as regulators of CDK kinases. Different cyclins exhibit distinct expression and degradation patterns which contribute to the temporal coordination of each mitotic event. In contrast to cyclin A1, which is present only in germ cells, this cyclin is expressed in all tissues tested. This cyclin binds and activates CDC2 or CDK2 kinases, and thus promotes both cell cycle G1/S and G2/M transitions.

Immunogen information

Gene ID:

890

Uniprot

P20248

Synonyms:

CCN1; CCNA; Cyclin A2; CCNA2; cyclin-A2

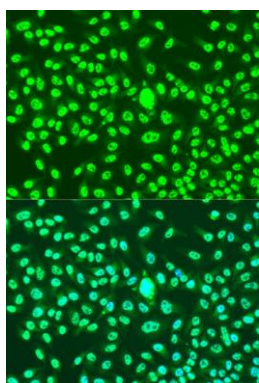
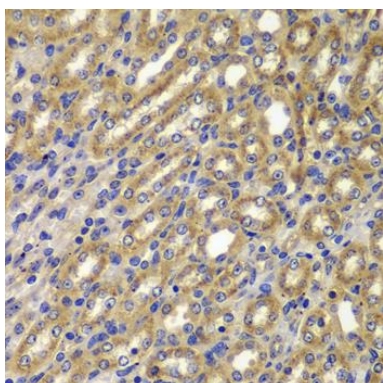
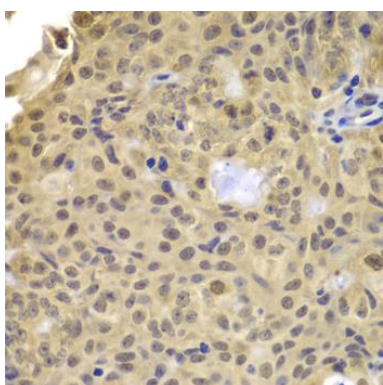
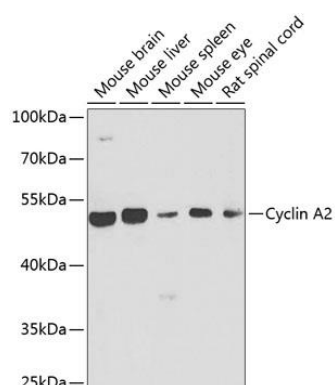
Immunogen:

A synthetic peptide of human Cyclin A2

Storage:

Store at -20°C. Avoid freeze / thaw cycles. Buffer: PBS with 0.02% sodium azide, 50% glycerol, pH7.3.

Product Images



Western blot analysis of extracts of various cell lines, using Cyclin A2 antibody (CAB7632) at 1:1000 dilution. Secondary antibody: HRP Goat Anti-Rabbit IgG (H+L) (CABS014) at 1:10000 dilution. Lysates/proteins: 25ug per lane. Blocking buffer: 3% nonfat dry milk in TBST. Detection: ECL Enhanced Kit (CABM00021). Exposure time: 90s.

Immunohistochemistry of paraffin-embedded human well-differentiated squamous skin carcinoma using Cyclin A2 antibody (CAB7632) at dilution of 1:100 (40x lens).

Immunohistochemistry of paraffin-embedded mouse kidney using Cyclin A2 antibody (CAB7632) at dilution of 1:100 (40x lens).

Immunofluorescence analysis of U2OS cells using Cyclin A2 antibody (CAB7632) at dilution of 1:100. Blue: DAPI for nuclear staining.