

Desmoplakin Rabbit Polyclonal Antibody



CAB7635

Product Information

Size:

20uL, 50uL, 100uL, 200uL

Observed MW:

330kDa

Calculated MW:

260kDa/278kDa/331kDa

Applications:

WB IHC

Reactivity:

Human, Mouse, Rat

Protein Background

This gene encodes a protein that anchors intermediate filaments to desmosomal plaques and forms an obligate component of functional desmosomes. Mutations in this gene are the cause of several cardiomyopathies and keratodermas, including skin fragility-woolly hair syndrome. Alternative splicing results in multiple transcript variants.

Immunogen information

Gene ID:

1832

Uniprot

P15924

Synonyms:

DCWHKTA; DP; DSP

Antibody Information

Recommended dilutions:

WB 1:500 - 1:2000 IHC 1:50
- 1:200

Source:

Rabbit

Isotype:

IgG

Purification:

Affinity purification

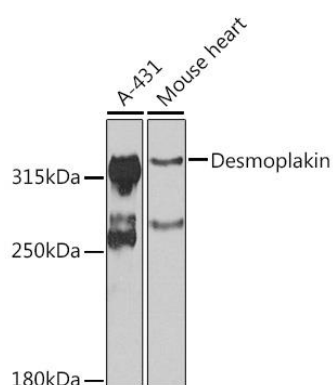
Immunogen:

A synthetic peptide corresponding to a sequence within amino acids 1-100 of human Desmoplakin (NP_004406.2).

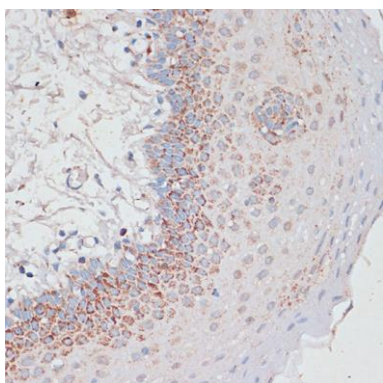
Storage:

Store at -20°C. Avoid freeze / thaw cycles. Buffer: PBS with 0.02% sodium azide, 50% glycerol, pH7.3.

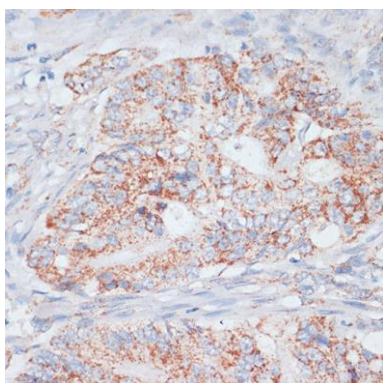
Product Images



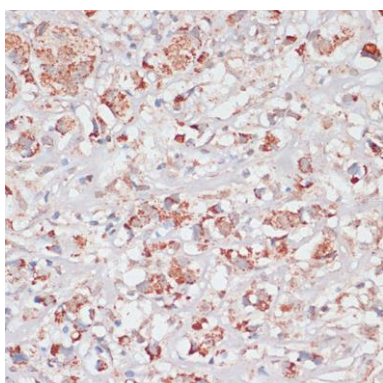
Western blot analysis of extracts of various cell lines, using Desmoplakin antibody (CAB7635) at 1:1000 dilution. Secondary antibody: HRP Goat Anti-Rabbit IgG (H+L) (CABS014) at 1:10000 dilution. Lysates/proteins: 25ug per lane. Blocking buffer: 3% nonfat dry milk in TBST. Detection: ECL Basic Kit (CABM00020). Exposure time: 90s.



Immunohistochemistry of paraffin-embedded Human tonsil using Desmoplakin antibody (CAB7635) at dilution of 1:100 (40x lens).



Immunohistochemistry of paraffin-embedded Human colon carcinoma using Desmoplakin antibody (CAB7635) at dilution of 1:100 (40x lens).



Immunohistochemistry of paraffin-embedded Human breast cancer using Desmoplakin antibody (CAB7635) at dilution of 1:100 (40x lens).