

UBIAD1 Rabbit Polyclonal Antibody



CAB7640

Product Information

Size:

20uL, 50uL, 100uL, 200uL

Observed MW:

41kDa

Calculated MW:

19kDa/36kDa

Applications:

WB IHC IF

Reactivity:

Human, Mouse, Rat

Antibody Information

Recommended dilutions:

WB 1:500 - 1:2000 IHC

1:100 - 1:200 IF 1:50 -

1:200

Source:

Rabbit

Isotype:

IgG

Purification:

Affinity purification

Protein Background

This gene encodes a protein thought to be involved in cholesterol and phospholipid metabolism. Mutations in this gene are associated with Schnyder crystalline corneal dystrophy.

Immunogen information

Gene ID:

29914

Uniprot

Q9Y5Z9

Synonyms:

UBIAD1; SCCD; TERE1

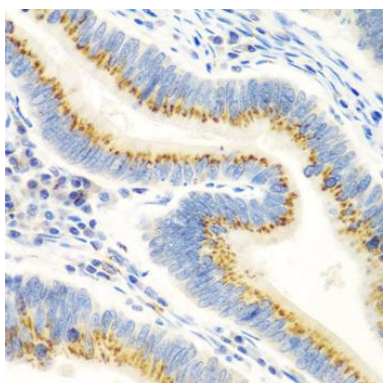
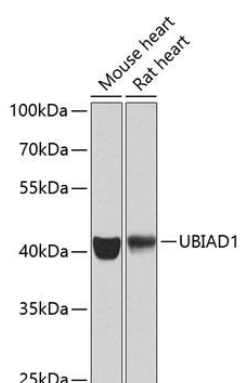
Immunogen:

A synthetic peptide corresponding to a sequence within amino acids 1-100 of human UBIAD1 (NP_037451.1).

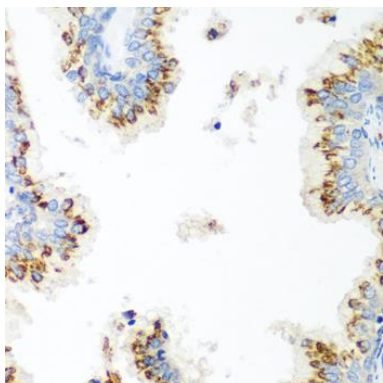
Storage:

Store at -20°C. Avoid freeze / thaw cycles. Buffer: PBS with 0.02% sodium azide, 50% glycerol, pH7.3.

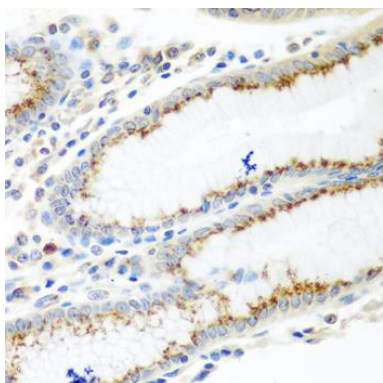
Product Images



Immunohistochemistry of paraffin-embedded human colon carcinoma using UBIAD1 antibody (CAB7640) at dilution of 1:100 (40x lens).



Immunohistochemistry of paraffin-embedded human prostate using UBIAD1 antibody (CAB7640) at dilution of 1:100 (40x lens).



Immunohistochemistry of paraffin-embedded human stomach using UBIAD1 antibody (CAB7640) at dilution of 1:100 (40x lens).