

# ANXA8L2 Rabbit Polyclonal Antibody



CAB7641

## Product Information

### Size:

20uL, 50uL, 100uL, 200uL

### Observed MW:

37kDa

### Calculated MW:

30kDa/36kDa

### Applications:

WB IHC IF

### Reactivity:

Human, Mouse, Rat

## Protein Background

This gene encodes a member of the annexin family of evolutionarily conserved Ca<sup>2+</sup> and phospholipid binding proteins. The encoded protein may function as an anticoagulant that indirectly inhibits the thromboplastin-specific complex. Overexpression of this gene has been associated with acute myelocytic leukemia. A highly similar duplicated copy of this gene is found in close proximity on the long arm of chromosome 10.

## Immunogen information

### Gene ID:

728113

### Uniprot

Q5VT79

### Synonyms:

ANXA8L1; ANXA8; ANXA8L2; VAC-beta; bA145E20.2

## Antibody Information

### Recommended dilutions:

WB 1:500 - 1:2000 IHC 1:50  
- 1:200 IF 1:50 - 1:100

### Source:

Rabbit

### Isotype:

IgG

### Purification:

Affinity purification

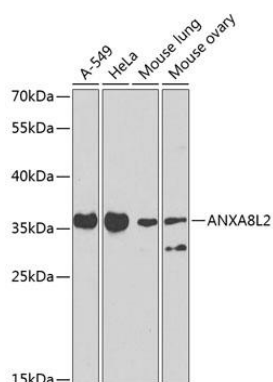
### Immunogen:

Recombinant fusion protein containing a sequence corresponding to amino acids 1-276 of human ANXA8L2 (NP\_001265853.1).

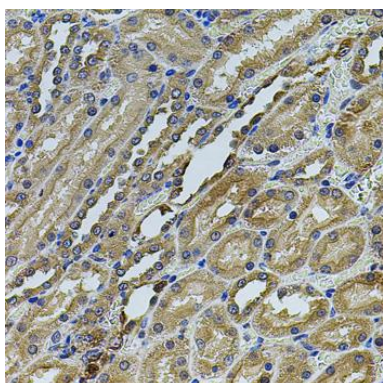
### Storage:

Store at -20°C. Avoid freeze / thaw cycles. Buffer: PBS with 0.02% sodium azide, 50% glycerol, pH7.3.

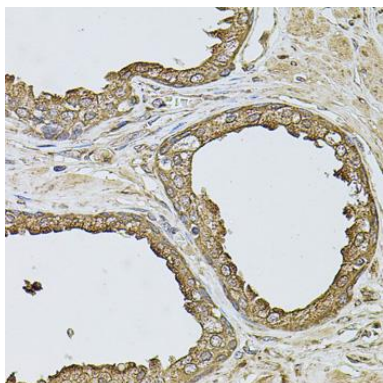
## Product Images



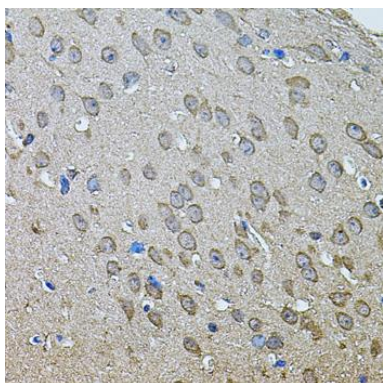
Western blot analysis of extracts of various cell lines, using ANXA8L2 antibody (CAB7641) at 1:1000 dilution. Secondary antibody: HRP Goat Anti-Rabbit IgG (H+L) (CABS014) at 1:10000 dilution. Lysates/proteins: 25ug per lane. Blocking buffer: 3% nonfat dry milk in TBST. Detection: ECL Basic Kit (CABM00020). Exposure time: 90s.



Immunohistochemistry of paraffin-embedded rat kidney using ANXA8L2 antibody (CAB7641) at dilution of 1:100 (40x lens).



Immunohistochemistry of paraffin-embedded human prostate using ANXA8L2 antibody (CAB7641) at dilution of 1:100 (40x lens).



Immunohistochemistry of paraffin-embedded mouse brain using ANXA8L2 antibody (CAB7641) at dilution of 1:100 (40x lens).