

# CSF3R Rabbit Polyclonal Antibody



CAB7661

## Product Information

### Size:

20uL, 50uL, 100uL, 200uL

### Observed MW:

102kDa

### Calculated MW:

85kDa/86kDa/92kDa/95kDa

### Applications:

WB

### Reactivity:

Human

## Protein Background

The protein encoded by this gene is the receptor for colony stimulating factor 3, a cytokine that controls the production, differentiation, and function of granulocytes. The encoded protein, which is a member of the family of cytokine receptors, may also function in some cell surface adhesion or recognition processes. Alternatively spliced transcript variants have been described. Mutations in this gene are a cause of Kostmann syndrome, also known as severe congenital neutropenia.

## Immunogen information

### Gene ID:

1441

### Uniprot

Q99062

### Synonyms:

CSF3R; CD114; GCSFR; SCN7

## Antibody Information

### Recommended dilutions:

WB 1:500 - 1:2000

### Source:

Rabbit

### Isotype:

IgG

### Purification:

Affinity purification

### Immunogen:

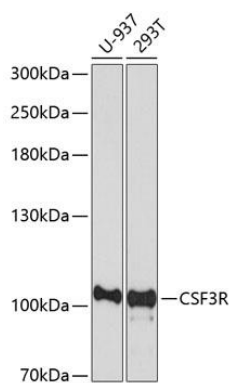
A synthetic peptide corresponding to a sequence within amino acids 650-750 of human CSF3R (NP\_000751.1).

### Storage:

Store at -20°C. Avoid freeze / thaw cycles. Buffer: PBS with 0.02% sodium azide, 50% glycerol, pH7.3.

## Product Images

---



Western blot analysis of extracts of various cell lines, using CSF3R antibody (CAB7661) at 1:1000 dilution. Secondary antibody: HRP Goat Anti-Rabbit IgG (H+L) (CABS014) at 1:10000 dilution. Lysates/proteins: 25ug per lane. Blocking buffer: 3% nonfat dry milk in TBST. Detection: ECL Basic Kit (CABM00020). Exposure time: 90s.