

CYP3A5 Rabbit Polyclonal Antibody



CAB7663

Product Information

Size:

20uL, 50uL, 100uL, 200uL

Observed MW:

57kDa

Calculated MW:

15kDa/57kDa

Applications:

WB

Reactivity:

Human, Mouse, Rat

Antibody Information

Recommended dilutions:

WB 1:500 - 1:2000

Source:

Rabbit

Isotype:

IgG

Purification:

Affinity purification

Protein Background

This gene encodes a member of the cytochrome P450 superfamily of enzymes. The cytochrome P450 proteins are monooxygenases which catalyze many reactions involved in drug metabolism and synthesis of cholesterol, steroids and other lipids. The encoded protein metabolizes drugs as well as the steroid hormones testosterone and progesterone. This gene is part of a cluster of cytochrome P450 genes on chromosome 7q21.1. Two pseudogenes of this gene have been identified within this cluster on chromosome 7. Expression of this gene is widely variable among populations, and a single nucleotide polymorphism that affects transcript splicing has been associated with susceptibility to hypertension. Alternative splicing results in multiple transcript variants.

Immunogen information

Gene ID:

1577

Uniprot

P20815

Synonyms:

CYP3A5; CP35; CYP11A5; P450PCN3; PCN3

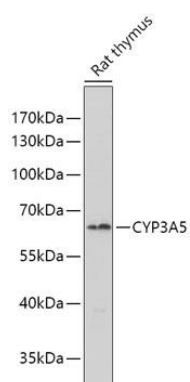
Immunogen:

Recombinant fusion protein containing a sequence corresponding to amino acids 233-502 of human CYP3A5 (NP_000768.1).

Storage:

Store at -20°C. Avoid freeze / thaw cycles. Buffer: PBS with 0.02% sodium azide, 50% glycerol, pH7.3.

Product Images



Western blot analysis of extracts of Rat thymus, using CYP3A5 antibody (CAB7663) at 1:1000 dilution. Secondary antibody: HRP Goat Anti-Rabbit IgG (H+L) (CABS014) at 1:10000 dilution. Lysates/proteins: 25ug per lane. Blocking buffer: 3% nonfat dry milk in TBST. Detection: ECL Basic Kit (CABM00020). Exposure time: 90s.