

ETF A Rabbit Polyclonal Antibody



CAB7670

Product Information

Size:

20uL, 50uL, 100uL, 200uL

Observed MW:

35kDa

Calculated MW:

30kDa/35kDa

Applications:

WB IHC IF

Reactivity:

Human, Mouse, Rat

Antibody Information

Recommended dilutions:

WB 1:500 - 1:2000 IHC 1:50
- 1:200 IF 1:50 - 1:100

Source:

Rabbit

Isotype:

IgG

Purification:

Affinity purification

Protein Background

ETF A participates in catalyzing the initial step of the mitochondrial fatty acid beta-oxidation. It shuttles electrons between primary flavoprotein dehydrogenases and the membrane-bound electron transfer flavoprotein ubiquinone oxidoreductase. Defects in electron-transfer-flavoprotein have been implicated in type II glutaricaciduria in which multiple acyl-CoA dehydrogenase deficiencies result in large excretion of glutaric, lactic, ethylmalonic, butyric, isobutyric, 2-methyl-butyric, and isovaleric acids. Two transcript variants encoding different isoforms have been found for this gene.

Immunogen information

Gene ID:

2108

Uniprot

P13804

Synonyms:

ETF A; EMA; GA2; MADD

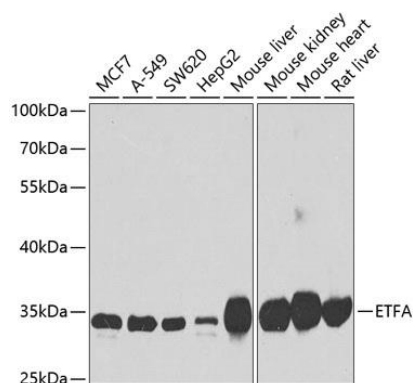
Immunogen:

Recombinant fusion protein containing a sequence corresponding to amino acids 1-333 of human ETF A (NP_000117.1).

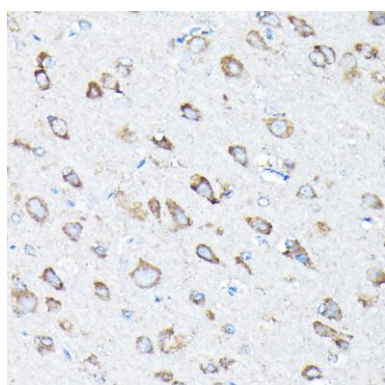
Storage:

Store at -20°C. Avoid freeze / thaw cycles. Buffer: PBS with 0.02% sodium azide, 50% glycerol, pH7.3.

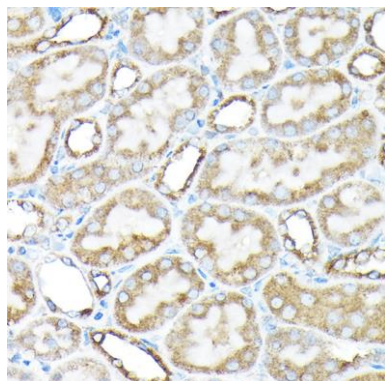
Product Images



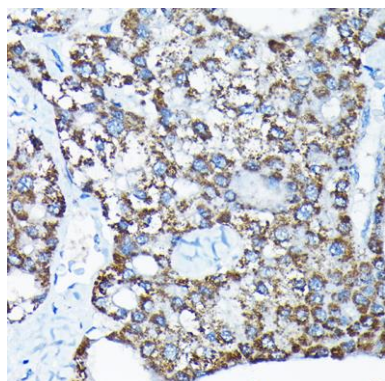
Western blot analysis of extracts of various cell lines, using ETFA antibody (CAB7670) at 1:1000 dilution. Secondary antibody: HRP Goat Anti-Rabbit IgG (H+L) (CABS014) at 1:10000 dilution. Lysates/proteins: 25ug per lane. Blocking buffer: 3% nonfat dry milk in TBST. Detection: ECL Basic Kit (CABM00020). Exposure time: 90s.



Immunohistochemistry of paraffin-embedded rat brain using ETFA Rabbit pAb (CAB7670) at dilution of 1:200 (40x lens).



Immunohistochemistry of paraffin-embedded rat kidney using ETFA Rabbit pAb (CAB7670) at dilution of 1:200 (40x lens).



Immunohistochemistry of paraffin-embedded human liver cancer using ETFA Rabbit pAb (CAB7670) at dilution of 1:200 (40x lens).