

HSPA6 Rabbit Polyclonal Antibody



CAB7688

Product Information

Size:

20uL, 50uL, 100uL, 200uL

Observed MW:

71kDa

Calculated MW:

71kDa

Applications:

WB IHC

Reactivity:

Human, Mouse, Rat

Antibody Information

Recommended dilutions:

WB 1:500 - 1:2000 IHC 1:50
- 1:200

Source:

Rabbit

Isotype:

IgG

Purification:

Affinity purification

Protein Background

Immunogen information

Gene ID:

3310

Uniprot

P17066

Synonyms:

HSPA6; HSP70B

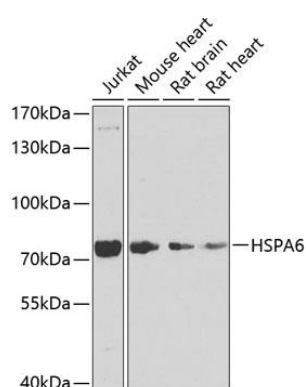
Immunogen:

Recombinant fusion protein containing a sequence corresponding to amino acids 474-643 of human HSPA6 (NP_002146.2).

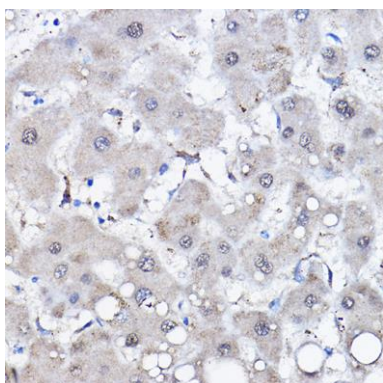
Storage:

Store at -20°C. Avoid freeze / thaw cycles. Buffer: PBS with 0.02% sodium azide, 50% glycerol, pH7.3.

Product Images



Western blot analysis of extracts of various cell lines, using HSPA6 antibody (CAB7688) at 1:1000 dilution. Secondary antibody: HRP Goat Anti-Rabbit IgG (H+L) (CABS014) at 1:10000 dilution. Lysates/proteins: 25ug per lane. Blocking buffer: 3% nonfat dry milk in TBST. Detection: ECL Basic Kit (CABM00020). Exposure time: 30s.



Immunohistochemistry of paraffin-embedded human liver using HSPA6 Rabbit pAb (CAB7688) at dilution of 1:100 (40x lens).