

# IGSF3 Rabbit Polyclonal Antibody



CAB7689

---

## Product Information

### Size:

20uL, 50uL, 100uL, 200uL

### Observed MW:

125kDa

### Calculated MW:

135kDa/137kDa

### Applications:

WB IHC

### Reactivity:

Human

## Protein Background

The protein encoded by this gene is an immunoglobulin-like membrane protein containing several V-type Ig-like domains. A mutation in this gene has been associated with bilateral nasolacrimal duct obstruction (LCDD).

## Immunogen information

### Gene ID:

3321

### Uniprot

O75054

### Synonyms:

IGSF3; EWI-3; LCDD; V8

## Antibody Information

### Recommended dilutions:

WB 1:500 - 1:2000 IHC 1:50  
- 1:200

### Source:

Rabbit

### Isotype:

IgG

### Purification:

Affinity purification

### Immunogen:

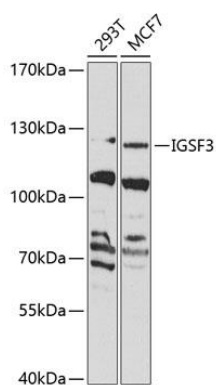
Recombinant fusion protein containing a sequence corresponding to amino acids 350-562 of human IGSF3 (NP\_001007238.1).

### Storage:

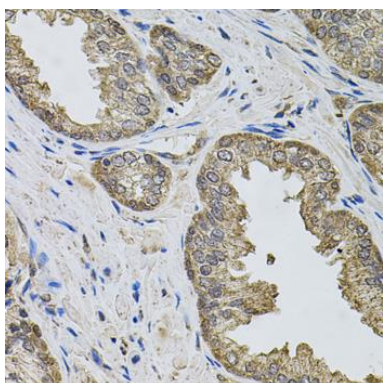
Store at -20°C. Avoid freeze / thaw cycles. Buffer: PBS with 0.02% sodium azide, 50% glycerol, pH7.3.

## Product Images

---



Western blot analysis of extracts of various cell lines, using IGSF3 Antibody (CAB7689) at 1:1000 dilution. Secondary antibody: HRP Goat Anti-Rabbit IgG (H+L) (CABS014) at 1:10000 dilution. Lysates/proteins: 25ug per lane. Blocking buffer: 3% nonfat dry milk in TBST. Detection: ECL Basic Kit (CABM00020). Exposure time: 90s.



Immunohistochemistry of paraffin-embedded human prostate using IGSF3 antibody (CAB7689) (40x lens).