

# IRF1 Rabbit Polyclonal Antibody



CAB7692

## Product Information

### Size:

20uL, 50uL, 100uL, 200uL

### Observed MW:

50KDa

### Calculated MW:

36kDa

### Applications:

WB IHC IF

### Reactivity:

Human, Mouse, Rat

## Protein Background

IRF1 encodes interferon regulatory factor 1, a member of the interferon regulatory transcription factor (IRF) family. IRF1 serves as an activator of interferons alpha and beta transcription, and in mouse it has been shown to be required for double-stranded RNA induction of these genes. IRF1 also functions as a transcription activator of genes induced by interferons alpha, beta, and gamma. Further, IRF1 has been shown to play roles in regulating apoptosis and tumor-suppression.

## Immunogen information

### Gene ID:

3659

### Uniprot

P10914

### Synonyms:

IRF1; IRF-1; MAR

## Antibody Information

### Recommended dilutions:

WB 1:500 - 1:2000 IHC 1:50  
- 1:100 IF 1:50 - 1:100

### Source:

Rabbit

### Isotype:

IgG

### Purification:

Affinity purification

### Immunogen:

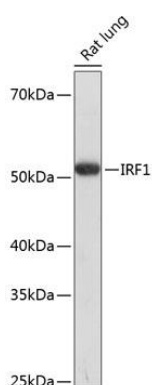
A synthetic peptide of human IRF1

### Storage:

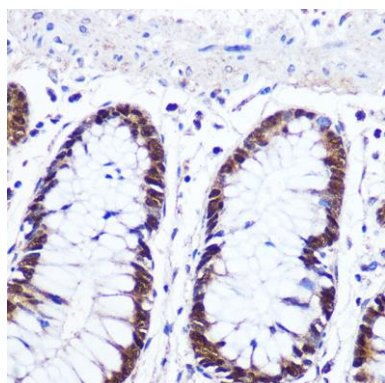
Store at -20°C. Avoid freeze / thaw cycles. Buffer: PBS with 0.02% sodium azide, 50% glycerol, pH7.3.

## Product Images

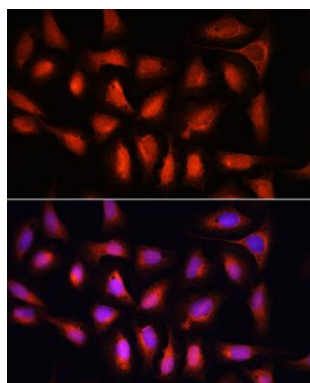
---



Western blot analysis of extracts of Rat lung, using IRF1 Polyclonal Antibody (CAB7692) at 1:1000 dilution. Secondary antibody: HRP Goat Anti-Rabbit IgG (H+L) (CABS014) at 1:10000 dilution. Lysates/proteins: 25ug per lane. Blocking buffer: 3% nonfat dry milk in TBST. Detection: ECL Basic Kit (CABM00020). Exposure time: 3min.



Immunohistochemistry of paraffin-embedded Human colon using IRF1 Rabbit pAb (CAB7692) at dilution of 1:100 (40x lens).



Immunofluorescence analysis of U-2 OS cells using IRF1 antibody (CAB7692) at dilution of 1:100. Blue: DAPI for nuclear staining.