

# PGD Rabbit Polyclonal Antibody



CAB7710

---

## Product Information

### Size:

20uL, 50uL, 100uL, 200uL

### Observed MW:

46kDa

### Calculated MW:

51kDa/53kDa

### Applications:

WB IHC

### Reactivity:

Human, Mouse, Rat

## Protein Background

6-phosphogluconate dehydrogenase is the second dehydrogenase in the pentose phosphate shunt. Deficiency of this enzyme is generally asymptomatic, and the inheritance of this disorder is autosomal dominant. Hemolysis results from combined deficiency of 6-phosphogluconate dehydrogenase and 6-phosphogluconolactonase suggesting a synergism of the two enzymopathies. Several transcript variants encoding different isoforms have been found for this gene.

## Immunogen information

### Gene ID:

5226

### Uniprot

P52209

### Synonyms:

PGD; 6PGD

## Antibody Information

### Recommended dilutions:

WB 1:500 - 1:2000 IHC 1:50 - 1:200

### Source:

Rabbit

### Isotype:

IgG

### Purification:

Affinity purification

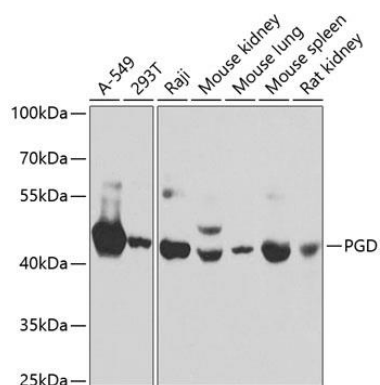
### Immunogen:

Recombinant fusion protein containing a sequence corresponding to amino acids 184-483 of human PGD (NP\_002622.2).

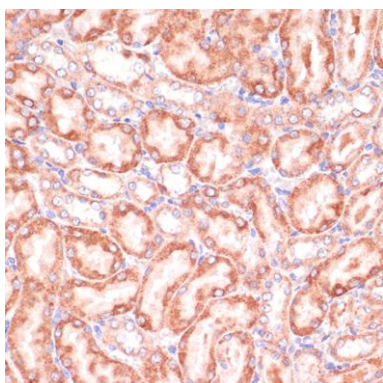
### Storage:

Store at -20°C. Avoid freeze / thaw cycles. Buffer: PBS with 0.02% sodium azide, 50% glycerol, pH7.3.

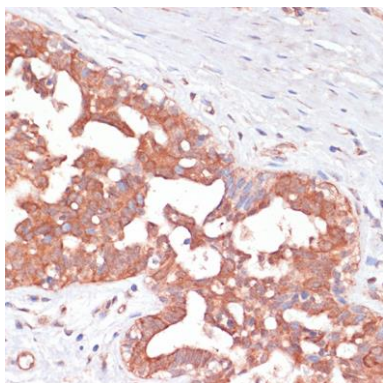
## Product Images



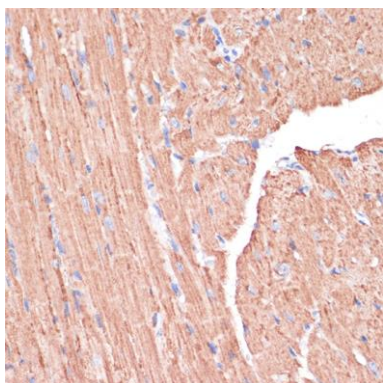
Western blot analysis of extracts of various cell lines, using PGD antibody (CAB7710) at 1:1000 dilution. Secondary antibody: HRP Goat Anti-Rabbit IgG (H+L) (CABS014) at 1:10000 dilution. Lysates/proteins: 25ug per lane. Blocking buffer: 3% nonfat dry milk in TBST.



Immunohistochemistry of paraffin-embedded Rat kidney using PGD antibody (CAB7710) at dilution of 1:100 (40x lens).



Immunohistochemistry of paraffin-embedded Human mammary cancer using PGD antibody (CAB7710) at dilution of 1:100 (40x lens).



Immunohistochemistry of paraffin-embedded Mouse heart using PGD antibody (CAB7710) at dilution of 1:100 (40x lens).