

PRKDC Rabbit Polyclonal Antibody



CAB7716

Product Information

Size:

20uL, 50uL, 100uL, 200uL

Observed MW:

469kDa

Calculated MW:

465kDa/469kDa

Applications:

WB IHC IF

Reactivity:

Human, Mouse

Antibody Information

Recommended dilutions:

WB 1:500 - 1:2000 IHC 1:50
- 1:200 IF 1:50 - 1:200

Source:

Rabbit

Isotype:

IgG

Purification:

Affinity purification

Protein Background

This gene encodes the catalytic subunit of the DNA-dependent protein kinase (DNA-PK). It functions with the Ku70/Ku80 heterodimer protein in DNA double strand break repair and recombination. The protein encoded is a member of the PI3/PI4-kinase family.

Immunogen information

Gene ID:

5591

Uniprot

P78527

Synonyms:

PRKDC; DNA-PKcs; DNAPK; DNP1; HYRC; HYRC1; IMD26; XRCC7; p350

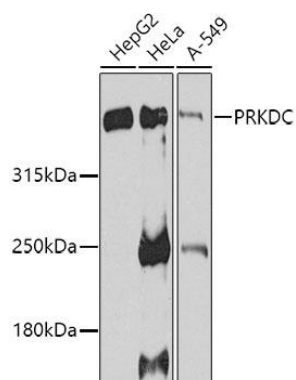
Immunogen:

A synthetic peptide of human PRKDC

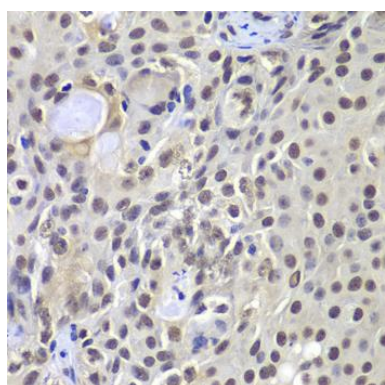
Storage:

Store at -20°C. Avoid freeze / thaw cycles. Buffer: PBS with 0.02% sodium azide, 50% glycerol, pH7.3.

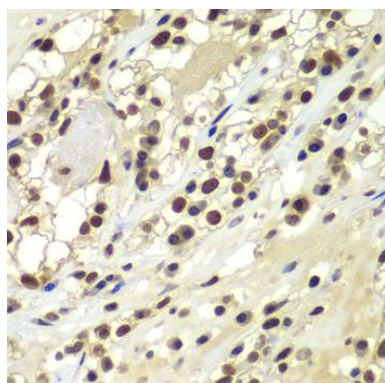
Product Images



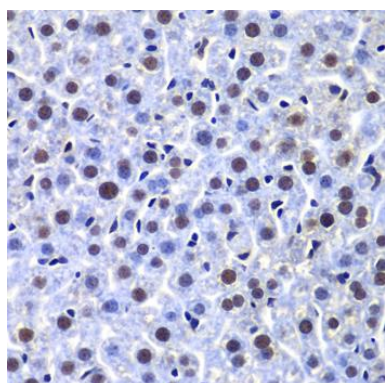
Western blot analysis of extracts of various cell lines, using PRKDC antibody (CAB7716) at 1:1000 dilution. Secondary antibody: HRP Goat Anti-Rabbit IgG (H+L) (CABS014) at 1:10000 dilution. Lysates/proteins: 25ug per lane. Blocking buffer: 3% nonfat dry milk in TBST. Detection: ECL Basic Kit (CABM00020). Exposure time: 90s.



Immunohistochemistry of paraffin-embedded human well-differentiated squamous skin carcinoma using PRKDC antibody (CAB7716) at dilution of 1:100 (40x lens).



Immunohistochemistry of paraffin-embedded human kidney cancer using PRKDC antibody (CAB7716) at dilution of 1:100 (40x lens).



Immunohistochemistry of paraffin-embedded mouse liver using PRKDC antibody (CAB7716) at dilution of 1:100 (40x lens).