

# PSEN2 Rabbit Polyclonal Antibody



CAB7719

## Product Information

### Size:

20uL, 50uL, 100uL, 200uL

### Observed MW:

21kDa/35kDa/50kDa

### Calculated MW:

46kDa/50kDa

### Applications:

WB IHC IF

### Reactivity:

Human, Mouse, Rat

## Antibody Information

### Recommended dilutions:

WB 1:500 - 1:2000 IHC 1:50  
- 1:200 IF 1:50 - 1:200

### Source:

Rabbit

### Isotype:

IgG

### Purification:

Affinity purification

## Protein Background

Alzheimer's disease (AD) patients with an inherited form of the disease carry mutations in the presenilin proteins (PSEN1 or PSEN2) or the amyloid precursor protein (APP). These disease-linked mutations result in increased production of the longer form of amyloid-beta (main component of amyloid deposits found in AD brains). Presenilins are postulated to regulate APP processing through their effects on gamma-secretase, an enzyme that cleaves APP. Also, it is thought that the presenilins are involved in the cleavage of the Notch receptor such that, they either directly regulate gamma-secretase activity, or themselves act as protease enzymes. Two alternatively spliced transcript variants encoding different isoforms of PSEN2 have been identified.

## Immunogen information

### Gene ID:

5664

### Uniprot

P49810

### Synonyms:

PSEN2; AD3L; AD4; CMD1V; PS2; STM2

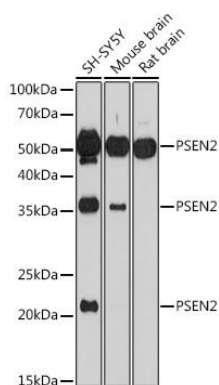
### Immunogen:

Recombinant protein of human PSEN2.

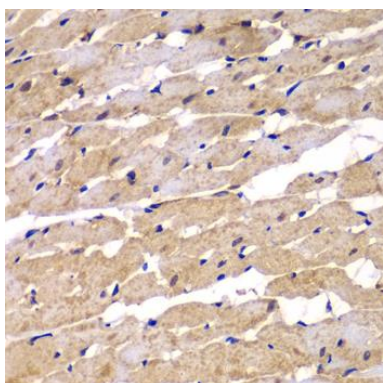
### Storage:

Store at -20°C. Avoid freeze / thaw cycles. Buffer: PBS with 0.02% sodium azide, 50% glycerol, pH7.3.

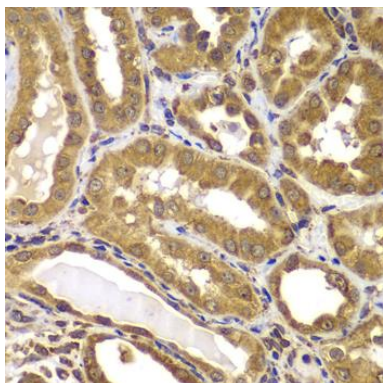
## Product Images



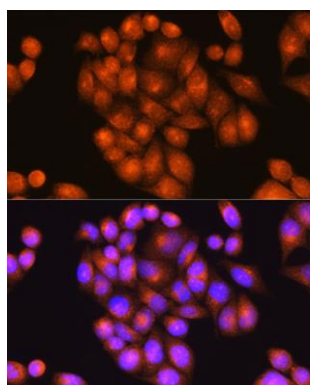
Western blot analysis of extracts of various cell lines, using PSEN2 antibody (CAB7719) at 1:1000 dilution. Secondary antibody: HRP Goat Anti-Rabbit IgG (H+L) (CABS014) at 1:10000 dilution. Lysates/proteins: 25ug per lane. Blocking buffer: 3% nonfat dry milk in TBST. Detection: ECL Basic Kit (CABM00020). Exposure time: 90s.



Immunohistochemistry of paraffin-embedded rat heart using PSEN2 antibody (CAB7719) at dilution of 1:100 (40x lens).



Immunohistochemistry of paraffin-embedded human kidney using PSEN2 antibody (CAB7719) at dilution of 1:100 (40x lens).



Immunofluorescence analysis of HeLa cells using PSEN2 Rabbit pAb (CAB7719) at dilution of 1:100 (40x lens). Blue: DAPI for nuclear staining.