

# RAC1 Rabbit Polyclonal Antibody



CAB7720

## Product Information

### Size:

20uL, 50uL, 100uL, 200uL

### Observed MW:

21KDa

### Calculated MW:

21kDa/23kDa

### Applications:

WB IHC IF

### Reactivity:

Human, Mouse, Rat

## Protein Background

The protein encoded by this gene is a GTPase which belongs to the RAS superfamily of small GTP-binding proteins. Members of this superfamily appear to regulate a diverse array of cellular events, including the control of cell growth, cytoskeletal reorganization, and the activation of protein kinases. Two transcript variants encoding different isoforms have been found for this gene.

## Immunogen information

### Gene ID:

5879

### Uniprot

P63000

### Synonyms:

RAC1; MIG5; Rac-1; TC-25; p21-Rac1

## Antibody Information

### Recommended dilutions:

WB 1:500 - 1:2000 IHC 1:50  
- 1:200 IF 1:50 - 1:200

### Source:

Rabbit

### Isotype:

IgG

### Purification:

Affinity purification

### Immunogen:

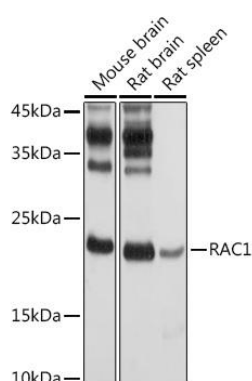
Recombinant fusion protein containing a sequence corresponding to amino acids 1-192 of human RAC1 (NP\_008839.2).

### Storage:

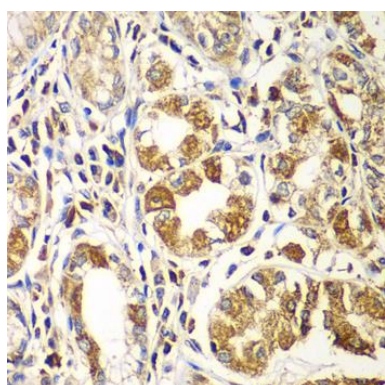
Store at -20°C. Avoid freeze / thaw cycles. Buffer: PBS with 0.02% sodium azide, 50% glycerol, pH7.3.

## Product Images

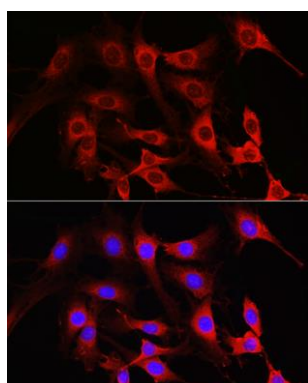
---



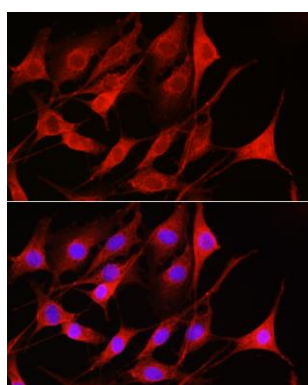
Western blot analysis of extracts of various cell lines, using RAC1 antibody (CAB7720) at 1:1000 dilution. Secondary antibody: HRP Goat Anti-Rabbit IgG (H+L) (CABS014) at 1:10000 dilution. Lysates/proteins: 25ug per lane. Blocking buffer: 3% nonfat dry milk in TBST. Detection: ECL Basic Kit (CABM00020). Exposure time: 30s.



Immunohistochemistry of paraffin-embedded human gastric using RAC1 antibody (CAB7720) at dilution of 1:100 (40x lens).



Immunofluorescence analysis of C6 cells using RAC1 Rabbit pAb (CAB7720) at dilution of 1:100 (40x lens). Blue: DAPI for nuclear staining.



Immunofluorescence analysis of NIH-3T3 cells using RAC1 Rabbit pAb (CAB7720) at dilution of 1:100 (40x lens). Blue: DAPI for nuclear staining.