

CLIP1 Rabbit Polyclonal Antibody



CAB7722

Product Information

Size:

20uL, 50uL, 100uL, 200uL

Observed MW:

162kDa

Calculated MW:

156kDa/160kDa/162kDa

Applications:

WB IHC

Reactivity:

Human, Mouse, Rat

Protein Background

The protein encoded by this gene links endocytic vesicles to microtubules. This gene is highly expressed in Reed-Sternberg cells of Hodgkin disease. Several transcript variants encoding different isoforms have been found for this gene.

Immunogen information

Gene ID:

6249

Uniprot

P30622

Synonyms:

CLIP1; CLIP; CLIP-170; CLIP170; CYLN1; RSN

Antibody Information

Recommended dilutions:

WB 1:500 - 1:2000 IHC 1:50
- 1:200

Source:

Rabbit

Isotype:

IgG

Purification:

Affinity purification

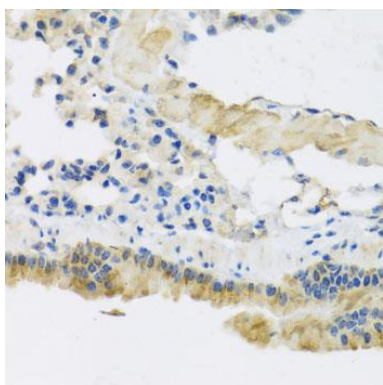
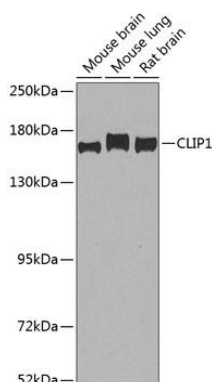
Immunogen:

Recombinant fusion protein containing a sequence corresponding to amino acids 1228-1427 of human CLIP1 (NP_002947.1).

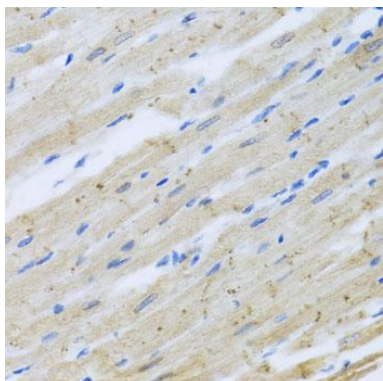
Storage:

Store at -20°C. Avoid freeze / thaw cycles. Buffer: PBS with 0.02% sodium azide, 50% glycerol, pH7.3.

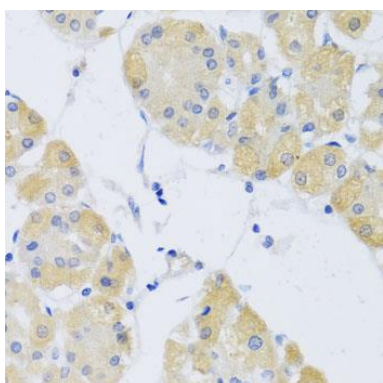
Product Images



Immunohistochemistry of paraffin-embedded mouse lung using CLIP1 antibody (CAB7722) at dilution of 1:100 (40x lens).



Immunohistochemistry of paraffin-embedded rat heart using CLIP1 antibody (CAB7722) at dilution of 1:100 (40x lens).



Immunohistochemistry of paraffin-embedded human stomach using CLIP1 antibody (CAB7722) at dilution of 1:100 (40x lens).