

MAP2K4 Rabbit Polyclonal Antibody



CAB7724

Product Information

Size:

20uL, 50uL, 100uL, 200uL

Observed MW:

44kDa

Calculated MW:

44kDa/45kDa

Applications:

WB IHC IF IP

Reactivity:

Human, Mouse, Rat

Antibody Information

Recommended dilutions:

WB 1:1000 - 1:4000 IHC
1:50 - 1:200 IF 1:50 - 1:200
IP 1:50 - 1:100

Source:

Rabbit

Isotype:

IgG

Purification:

Affinity purification

Protein Background

This gene encodes a member of the mitogen-activated protein kinase (MAPK) family. Members of this family act as an integration point for multiple biochemical signals and are involved in a wide variety of cellular processes such as proliferation, differentiation, transcription regulation, and development. They form a three-tiered signaling module composed of MAPKKKs, MAPKKs, and MAPKs. This protein is phosphorylated at serine and threonine residues by MAPKKKs and subsequently phosphorylates downstream MAPK targets at threonine and tyrosine residues. A similar protein in mouse has been reported to play a role in liver organogenesis. A pseudogene of this gene is located on the long arm of chromosome X. Alternative splicing results in multiple transcript variants.

Immunogen information

Gene ID:

6416

Uniprot

P45985

Synonyms:

MAP2K4; JNKK; JNKK1; MAPKK4; MEK4; MKK4; PRKMK4; SAPKK-1;
SAPKK1; SEK1; SERK1; SKK1

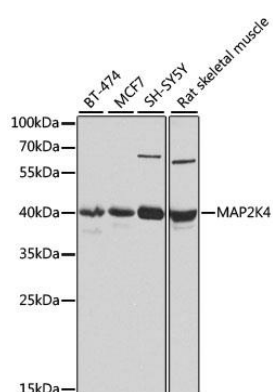
Immunogen:

A synthetic peptide of human MAP2K4

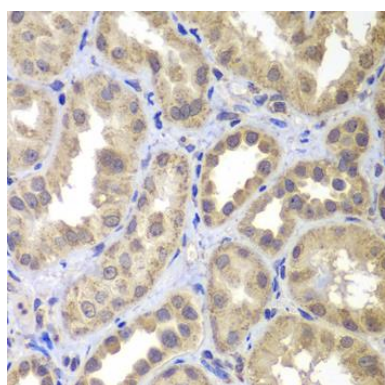
Storage:

Store at -20°C. Avoid freeze / thaw cycles. Buffer: PBS with 0.02% sodium azide, 50% glycerol, pH7.3.

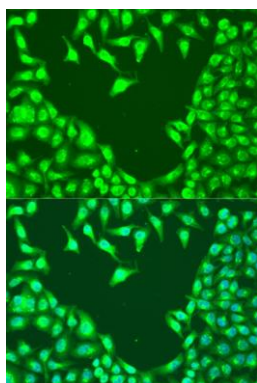
Product Images



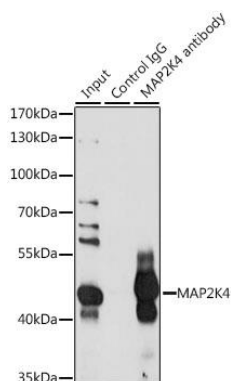
Western blot analysis of extracts of various cell lines, using MAP2K4 antibody (CAB7724) at 1:1000 dilution. Secondary antibody: HRP Goat Anti-Rabbit IgG (H+L) (CABS014) at 1:10000 dilution. Lysates/proteins: 25ug per lane. Blocking buffer: 3% nonfat dry milk in TBST. Detection: ECL Basic Kit (CABM00020). Exposure time: 60s.



Immunohistochemistry of paraffin-embedded human kidney using MAP2K4 antibody (CAB7724) at dilution of 1:100 (40x lens).



Immunofluorescence analysis of U2OS cells using MAP2K4 antibody (CAB7724) at dilution of 1:100. Blue: DAPI for nuclear staining.



Immunoprecipitation analysis of 200ug extracts of MCF-7 cells, using 3 ug MAP2K4 antibody (CAB7724). Western blot was performed from the immunoprecipitate using MAP2K4 antibody (CAB7724) at a dilution of 1:1000.