

# SLC4A2 Rabbit Polyclonal Antibody



CAB7729

## Product Information

### Size:

20uL, 50uL, 100uL, 200uL

### Observed MW:

140kDa

### Calculated MW:

135kDa/136kDa/137kDa

### Applications:

WB

### Reactivity:

Human

## Antibody Information

### Recommended dilutions:

WB 1:500 - 1:2000

### Source:

Rabbit

### Isotype:

IgG

### Purification:

Affinity purification

## Protein Background

This gene encodes a member of the anion exchanger family of membrane transport proteins. The encoded protein regulates intracellular pH, biliary bicarbonate secretion, and chloride uptake. Reduced expression of this gene may be associated with primary biliary cirrhosis (PBC) in human patients, while differential expression of this gene may be associated with malignant hepatocellular carcinoma, colon and gastric cancers.

## Immunogen information

### Gene ID:

6522

### Uniprot

P04920

### Synonyms:

SLC4A2; AE2; BND3L; EPB3L1; HKB3; NBND3

### Immunogen:

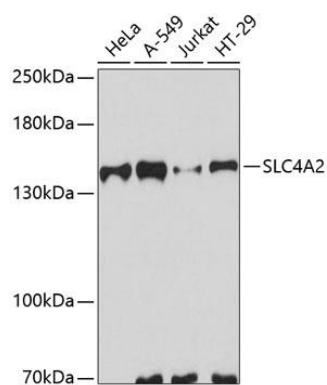
Recombinant fusion protein containing a sequence corresponding to amino acids 200-300 of human SLC4A2 (NP\_001186623.1).

### Storage:

Store at -20°C. Avoid freeze / thaw cycles. Buffer: PBS with 0.02% sodium azide, 50% glycerol, pH7.3.

## Product Images

---



Western blot analysis of extracts of various cell lines, using SLC4A2 antibody (CAB7729) at 1:3000 dilution. Secondary antibody: HRP Goat Anti-Rabbit IgG (H+L) (CABS014) at 1:10000 dilution. Lysates/proteins: 25ug per lane. Blocking buffer: 3% nonfat dry milk in TBST. Detection: ECL Basic Kit (CABM00020). Exposure time: 30s.