

SLC6A1 Rabbit Polyclonal Antibody



CAB7730

Product Information

Size:

20uL, 50uL, 100uL, 200uL

Observed MW:

67kDa

Calculated MW:

67kDa

Applications:

WB IHC

Reactivity:

Human, Mouse, Rat

Protein Background

The protein encoded by this gene is a gamma-aminobutyric acid (GABA) transporter that localizes to the plasma membrane. The encoded protein removes GABA from the synaptic cleft, restoring it to presynaptic terminals.

Immunogen information

Gene ID:

6529

Uniprot

P30531

Synonyms:

SLC6A1; GABATHG; GABATR; GAT1; MAE

Antibody Information

Recommended dilutions:

WB 1:500 - 1:2000 IHC 1:50
- 1:100

Source:

Rabbit

Isotype:

IgG

Purification:

Affinity purification

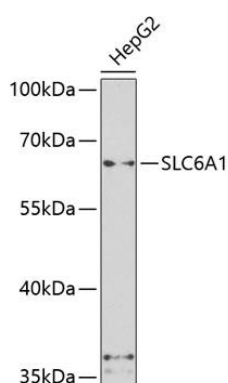
Immunogen:

A synthetic peptide of human SLC6A1

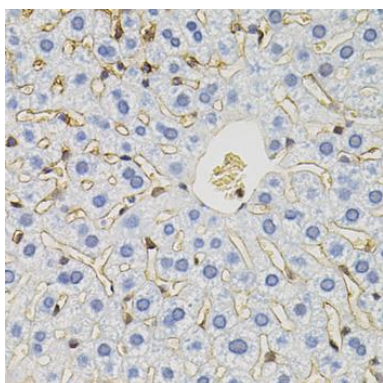
Storage:

Store at -20°C. Avoid freeze / thaw cycles. Buffer: PBS with 0.02% sodium azide, 50% glycerol, pH7.3.

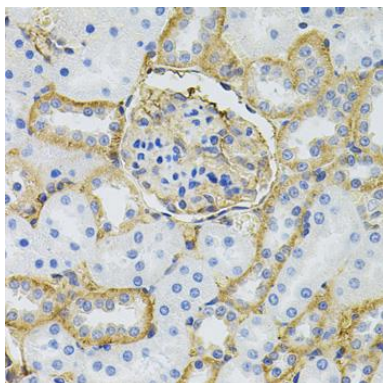
Product Images



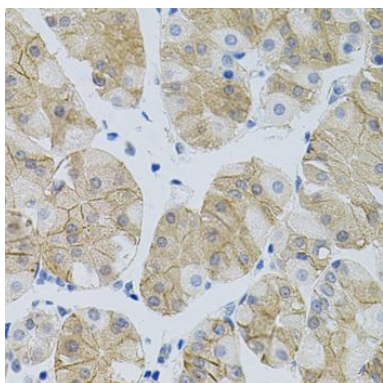
Western blot analysis of extracts of HepG2 cells, using SLC6A1 antibody (CAB7730) at 1:500 dilution. Secondary antibody: HRP Goat Anti-Rabbit IgG (H+L) (CABS014) at 1:10000 dilution. Lysates/proteins: 25ug per lane. Blocking buffer: 3% nonfat dry milk in TBST. Detection: ECL Basic Kit (CABM00020). Exposure time: 90s.



Immunohistochemistry of paraffin-embedded mouse liver using SLC6A1 antibody (CAB7730) (40x lens).



Immunohistochemistry of paraffin-embedded rat kidney using SLC6A1 antibody (CAB7730) (40x lens).



Immunohistochemistry of paraffin-embedded human stomach using SLC6A1 antibody (CAB7730) (40x lens).