

STXBP2 Rabbit Polyclonal Antibody



CAB7735

Product Information

Size:

20uL, 50uL, 100uL, 200uL

Observed MW:

66kDa

Calculated MW:

66kDa/67kDa

Applications:

WB IHC

Reactivity:

Human, Mouse, Rat

Antibody Information

Recommended dilutions:

WB 1:500 - 1:2000 IHC 1:50
- 1:200

Source:

Rabbit

Isotype:

IgG

Purification:

Affinity purification

Protein Background

This gene encodes a member of the STXBP/unc-18/SEC1 family. The encoded protein is involved in intracellular trafficking, control of SNARE (soluble NSF attachment protein receptor) complex assembly, and the release of cytotoxic granules by natural killer cells. Mutations in this gene are associated with familial hemophagocytic lymphohistiocytosis. Alternatively spliced transcript variants encoding different isoforms have been noted for this gene.

Immunogen information

Gene ID:

6813

Uniprot

Q15833

Synonyms:

STXBP2; FHL5; Hunc18b; MUNC18-2; UNC18-2; UNC18B; pp10122

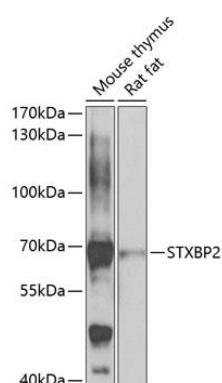
Immunogen:

Recombinant fusion protein containing a sequence corresponding to amino acids 1-280 of human STXBP2 (NP_001120868.1).

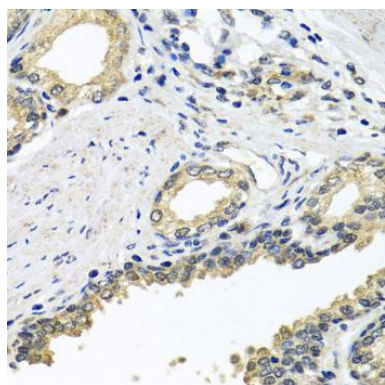
Storage:

Store at -20°C. Avoid freeze / thaw cycles. Buffer: PBS with 0.02% sodium azide, 50% glycerol, pH7.3.

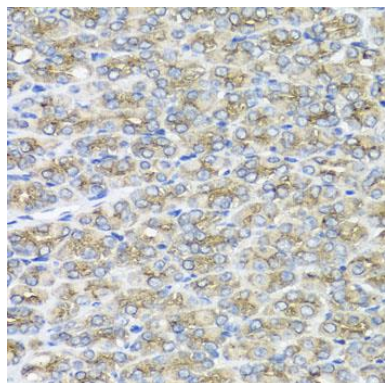
Product Images



Western blot analysis of extracts of various cell lines, using STXBP2 antibody (CAB7735) at 1:1000 dilution. Secondary antibody: HRP Goat Anti-Rabbit IgG (H+L) (CABS014) at 1:10000 dilution. Lysates/proteins: 25ug per lane. Blocking buffer: 3% nonfat dry milk in TBST. Detection: ECL Basic Kit (CABM00020). Exposure time: 30s.



Immunohistochemistry of paraffin-embedded human prostate using STXBP2 antibody (CAB7735) at dilution of 1:100 (40x lens).



Immunohistochemistry of paraffin-embedded mouse stomach using STXBP2 antibody (CAB7735) at dilution of 1:100 (40x lens).