

# SULT2B1 Rabbit Polyclonal Antibody



CAB7736

## Product Information

### Size:

20uL, 50uL, 100uL, 200uL

### Observed MW:

41kDa

### Calculated MW:

39kDa/41kDa

### Applications:

WB IHC IF

### Reactivity:

Human, Mouse, Rat

## Protein Background

Sulfotransferase enzymes catalyze the sulfate conjugation of many hormones, neurotransmitters, drugs, and xenobiotic compounds. These cytosolic enzymes are different in their tissue distributions and substrate specificities. The gene structure (number and length of exons) is similar among family members. This gene sulfates dehydroepiandrosterone but not 4-nitrophenol, a typical substrate for the phenol and estrogen sulfotransferase subfamilies. Two alternatively spliced variants that encode different isoforms have been described.

## Immunogen information

### Gene ID:

6820

### Uniprot

O00204

### Synonyms:

SULT2B1; HSST2

## Antibody Information

### Recommended dilutions:

WB 1:500 - 1:2000 IHC 1:50  
- 1:200 IF 1:50 - 1:100

### Source:

Rabbit

### Isotype:

IgG

### Purification:

Affinity purification

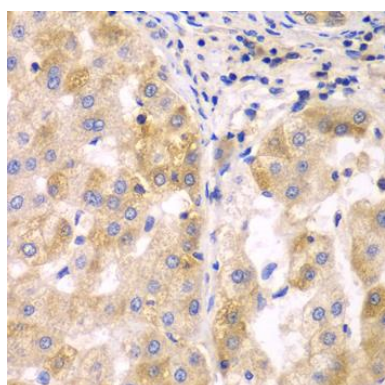
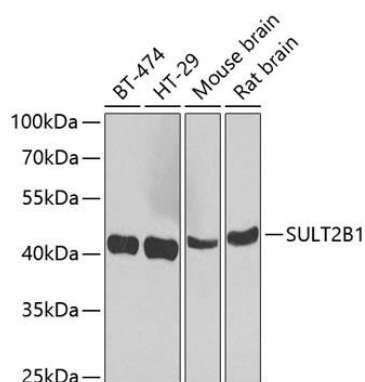
### Immunogen:

Recombinant fusion protein containing a sequence corresponding to amino acids 1-365 of human SULT2B1 (NP\_814444.1).

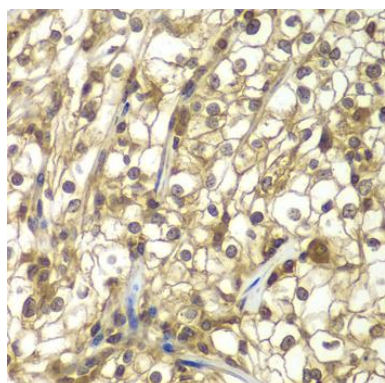
### Storage:

Store at -20°C. Avoid freeze / thaw cycles. Buffer: PBS with 0.02% sodium azide, 50% glycerol, pH7.3.

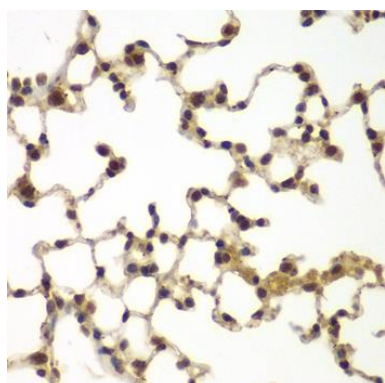
## Product Images



Immunohistochemistry of paraffin-embedded human liver cancer using SULT2B1 antibody (CAB7736) at dilution of 1:100 (40x lens).



Immunohistochemistry of paraffin-embedded human kidney cancer using SULT2B1 antibody (CAB7736) at dilution of 1:100 (40x lens).



Immunohistochemistry of paraffin-embedded mouse lung using SULT2B1 antibody (CAB7736) at dilution of 1:100 (40x lens).