

# SYT4 Rabbit Polyclonal Antibody



CAB7737

---

## Product Information

### Size:

20uL, 50uL, 100uL, 200uL

### Observed MW:

48kDa

### Calculated MW:

46kDa/47kDa

### Applications:

WB IHC IF

### Reactivity:

Human, Mouse, Rat

## Antibody Information

### Recommended dilutions:

WB 1:500 - 1:2000 IHC 1:50  
- 1:200 IF 1:50 - 1:200

### Source:

Rabbit

### Isotype:

IgG

### Purification:

Affinity purification

## Protein Background

### Immunogen information

#### Gene ID:

6860

#### Uniprot

Q9H2B2

#### Synonyms:

SYT4; HsT1192

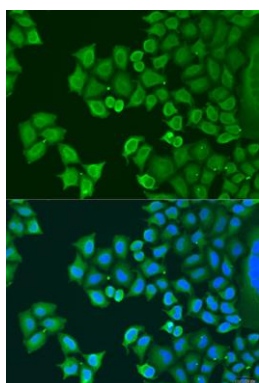
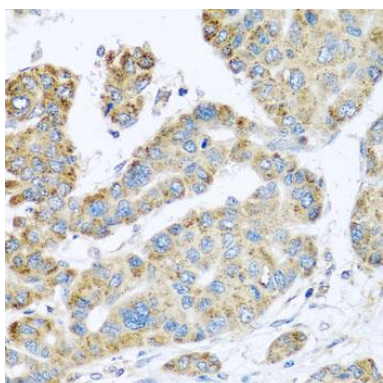
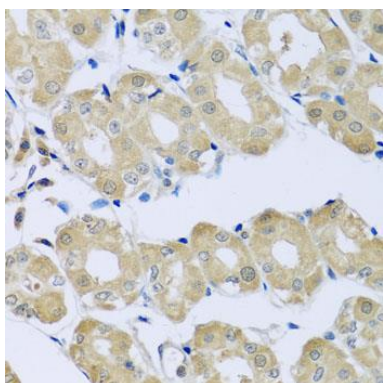
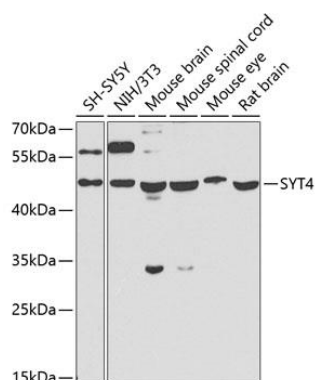
#### Immunogen:

Recombinant fusion protein containing a sequence corresponding to amino acids 38-190 of human SYT4 (NP\_065834.1).

#### Storage:

Store at -20°C. Avoid freeze / thaw cycles. Buffer: PBS with 0.02% sodium azide, 50% glycerol, pH7.3.

## Product Images



Western blot analysis of extracts of various cell lines, using SYT4 antibody (CAB7737) at 1:1000 dilution. Secondary antibody: HRP Goat Anti-Rabbit IgG (H+L) (CABS014) at 1:10000 dilution. Lysates/proteins: 25ug per lane. Blocking buffer: 3% nonfat dry milk in TBST. Detection: ECL Basic Kit (CABM00020). Exposure time: 90s.

Immunohistochemistry of paraffin-embedded human stomach using SYT4 antibody (CAB7737) at dilution of 1:100 (40x lens).

Immunohistochemistry of paraffin-embedded human liver cancer using SYT4 antibody (CAB7737) at dilution of 1:100 (40x lens).

Immunofluorescence analysis of U2OS cells using SYT4 antibody (CAB7737) at dilution of 1:100. Blue: DAPI for nuclear staining.