

TRPC3 Rabbit Polyclonal Antibody



CAB7742

Product Information

Size:

20uL, 50uL, 100uL, 200uL

Observed MW:

96kDa

Calculated MW:

96kDa/97kDa/105kDa

Applications:

WB IHC

Reactivity:

Human, Mouse, Rat

Protein Background

The protein encoded by this gene is a membrane protein that can form a non-selective channel permeable to calcium and other cations. The encoded protein appears to be induced to form channels by a receptor tyrosine kinase-activated phosphatidylinositol second messenger system and also by depletion of intracellular calcium stores. Two transcript variants encoding different isoforms have been found for this gene.

Immunogen information

Gene ID:

7222

Uniprot

Q13507

Synonyms:

TRPC3; SCA41; TRP3

Antibody Information

Recommended dilutions:

WB 1:500 - 1:2000 IHC 1:50
- 1:200

Source:

Rabbit

Isotype:

IgG

Purification:

Affinity purification

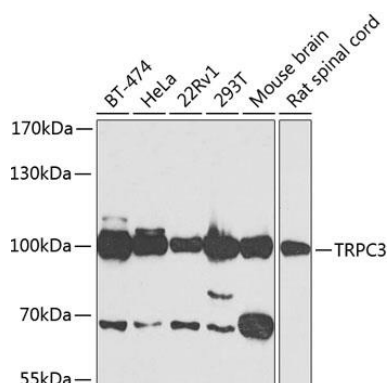
Immunogen:

A synthetic peptide of human TRPC3

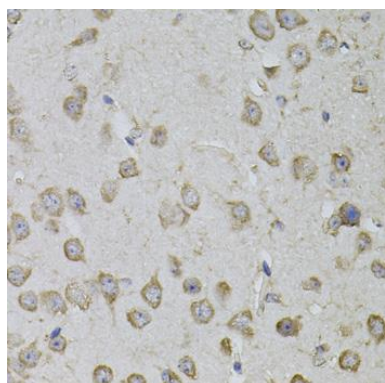
Storage:

Store at -20°C. Avoid freeze / thaw cycles. Buffer: PBS with 0.02% sodium azide, 50% glycerol, pH7.3.

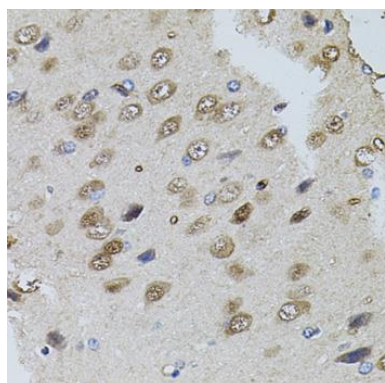
Product Images



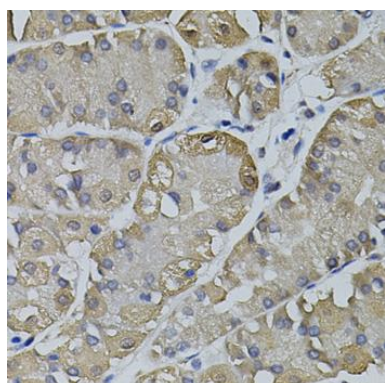
Western blot analysis of extracts of various cell lines, using TRPC3 antibody (CAB7742) at 1:500 dilution. Secondary antibody: HRP Goat Anti-Rabbit IgG (H+L) (CABS014) at 1:10000 dilution. Lysates/proteins: 25ug per lane. Blocking buffer: 3% nonfat dry milk in TBST. Detection: ECL Basic Kit (CABM00020). Exposure time: 90s.



Immunohistochemistry of paraffin-embedded mouse brain using TRPC3 antibody (CAB7742) (40x lens).



Immunohistochemistry of paraffin-embedded rat brain using TRPC3 antibody (CAB7742) (40x lens).



Immunohistochemistry of paraffin-embedded human stomach using TRPC3 antibody (CAB7742) (40x lens).