

ST8SIA2 Rabbit Polyclonal Antibody



CAB7748

Product Information

Size:

20uL, 50uL, 100uL, 200uL

Observed MW:

42kDa

Calculated MW:

42kDa

Applications:

WB IHC

Reactivity:

Human, Mouse, Rat

Antibody Information

Recommended dilutions:

WB 1:500 - 1:2000 IHC 1:50
- 1:200

Source:

Rabbit

Isotype:

IgG

Purification:

Affinity purification

Protein Background

The protein encoded by this gene is a type II membrane protein that is thought to catalyze the transfer of sialic acid from CMP-sialic acid to N-linked oligosaccharides and glycoproteins. The encoded protein may be found in the Golgi apparatus and may be involved in the production of polysialic acid, a modulator of the adhesive properties of neural cell adhesion molecule (NCAM1). This protein is a member of glycosyltransferase family 29.

Immunogen information

Gene ID:

8128

Uniprot

Q92186

Synonyms:

ST8SIA2; HsT19690; SIAT8-B; SIAT8B; ST8SIA-II; ST8SialI; STX;
alpha-2

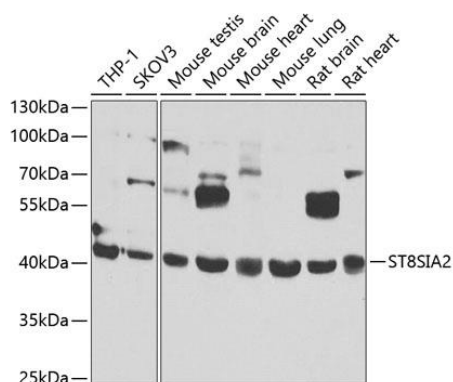
Immunogen:

Recombinant fusion protein containing a sequence corresponding to amino acids 24-160 of human ST8SIA2 (NP_006002.1).

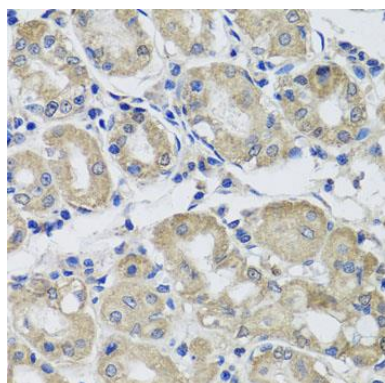
Storage:

Store at -20°C. Avoid freeze / thaw cycles. Buffer: PBS with 0.02% sodium azide, 50% glycerol, pH7.3.

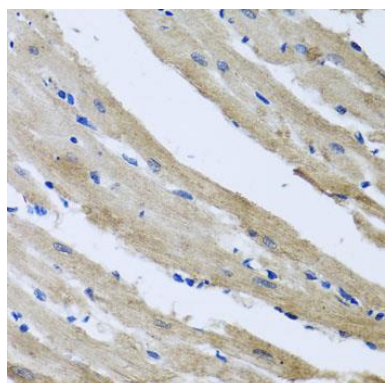
Product Images



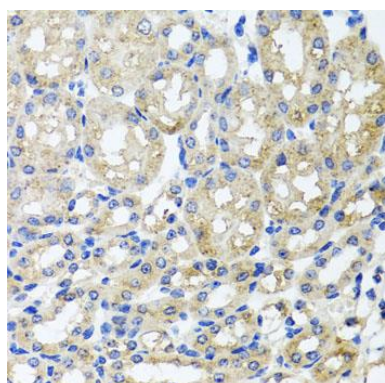
Western blot analysis of extracts of various cell lines, using ST8SIA2 antibody (CAB7748) at 1:1000 dilution. Secondary antibody: HRP Goat Anti-Rabbit IgG (H+L) (CABS014) at 1:10000 dilution. Lysates/proteins: 25ug per lane. Blocking buffer: 3% nonfat dry milk in TBST. Detection: ECL Basic Kit (CABM00020). Exposure time: 30s.



Immunohistochemistry of paraffin-embedded human stomach using ST8SIA2 antibody (CAB7748) at dilution of 1:100 (40x lens).



Immunohistochemistry of paraffin-embedded rat heart using ST8SIA2 antibody (CAB7748) at dilution of 1:100 (40x lens).



Immunohistochemistry of paraffin-embedded mouse kidney using ST8SIA2 antibody (CAB7748) at dilution of 1:100 (40x lens).