

# TTF2 Rabbit Polyclonal Antibody



CAB7751

---

## Product Information

### Size:

20uL, 50uL, 100uL, 200uL

### Observed MW:

130kDa

### Calculated MW:

75kDa/129kDa

### Applications:

WB IF

### Reactivity:

Human

## Antibody Information

### Recommended dilutions:

WB 1:500 - 1:2000 IF 1:50 - 1:200

### Source:

Rabbit

### Isotype:

IgG

### Purification:

Affinity purification

## Protein Background

This gene encodes a member of the SWI2/SNF2 family of proteins, which play a critical role in altering protein-DNA interactions. The encoded protein has been shown to have dsDNA-dependent ATPase activity and RNA polymerase II termination activity. This protein interacts with cell division cycle 5-like, associates with human splicing complexes, and plays a role in pre-mRNA splicing.

## Immunogen information

### Gene ID:

8458

### Uniprot

Q9UNY4

### Synonyms:

TTF2; HuF2; ZGRF6

### Immunogen:

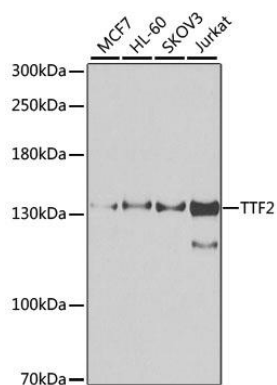
Recombinant fusion protein containing a sequence corresponding to amino acids 1-270 of human TTF2 (NP\_003585.3).

### Storage:

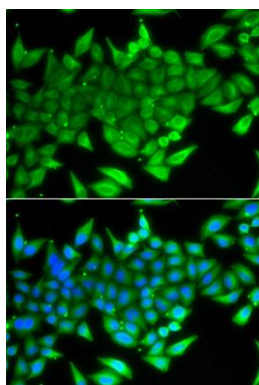
Store at -20°C. Avoid freeze / thaw cycles. Buffer: PBS with 0.02% sodium azide, 50% glycerol, pH7.3.

## Product Images

---



Western blot analysis of extracts of various cell lines, using TTF2 antibody (CAB7751) at 1:1000 dilution. Secondary antibody: HRP Goat Anti-Rabbit IgG (H+L) (CABS014) at 1:10000 dilution. Lysates/proteins: 25ug per lane. Blocking buffer: 3% nonfat dry milk in TBST. Detection: ECL Enhanced Kit (CABM00021). Exposure time: 30s.



Immunofluorescence analysis of A549 cells using TTF2 antibody (CAB7751). Blue: DAPI for nuclear staining.