

DGKE Rabbit Polyclonal Antibody



CAB7752

Product Information

Size:

20uL, 50uL, 100uL, 200uL

Observed MW:

64kDa

Calculated MW:

20kDa/63kDa

Applications:

WB IHC IF

Reactivity:

Human, Mouse

Protein Background

Diacylglycerol kinases are thought to be involved mainly in the regeneration of phosphatidylinositol (PI) from diacylglycerol in the PI-cycle during cell signal transduction. When expressed in mammalian cells, DGK-epsilon shows specificity for arachidonyl-containing diacylglycerol. DGK-epsilon is expressed predominantly in testis.

Immunogen information

Gene ID:

8526

Uniprot

P52429

Synonyms:

DGKE; AHUS7; DAGK5; DAGK6; DGK; NPHS7

Antibody Information

Recommended dilutions:

WB 1:500 - 1:2000 IHC 1:50
- 1:200 IF 1:50 - 1:200

Source:

Rabbit

Isotype:

IgG

Purification:

Affinity purification

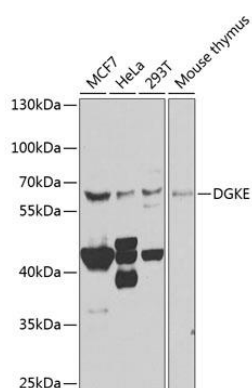
Immunogen:

Recombinant fusion protein containing a sequence corresponding to amino acids 40-260 of human DGKE (NP_003638.1).

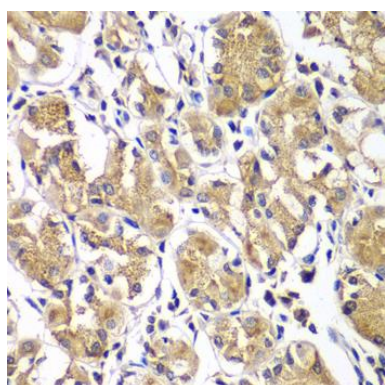
Storage:

Store at -20°C. Avoid freeze / thaw cycles. Buffer: PBS with 0.02% sodium azide, 50% glycerol, pH7.3.

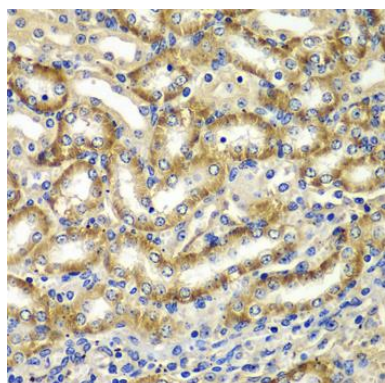
Product Images



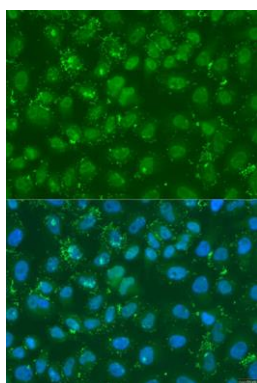
Western blot analysis of extracts of various cell lines, using DGKE antibody (CAB7752) at 1:1000 dilution. Secondary antibody: HRP Goat Anti-Rabbit IgG (H+L) (CABS014) at 1:10000 dilution. Lysates/proteins: 25ug per lane. Blocking buffer: 3% nonfat dry milk in TBST. Detection: ECL Basic Kit (CABM00020). Exposure time: 30s.



Immunohistochemistry of paraffin-embedded human gastric using DGKE antibody (CAB7752) at dilution of 1:100 (40x lens).



Immunohistochemistry of paraffin-embedded mouse kidney using DGKE antibody (CAB7752) at dilution of 1:100 (40x lens).



Immunofluorescence analysis of U2OS cells using DGKE antibody (CAB7752) at dilution of 1:100. Blue: DAPI for nuclear staining.