

PLA2G4C Rabbit Polyclonal Antibody



CAB7753

Product Information

Size:

20uL, 50uL, 100uL, 200uL

Observed MW:

80kDa

Calculated MW:

59kDa/60kDa/62kDa

Applications:

WB IHC IF

Reactivity:

Human

Protein Background

This gene encodes a protein which is a member of the phospholipase A2 enzyme family which hydrolyzes glycerophospholipids to produce free fatty acids and lysophospholipids, both of which serve as precursors in the production of signaling molecules. The encoded protein has been shown to be a calcium-independent and membrane bound enzyme. Multiple transcript variants encoding different isoforms have been found for this gene.

Immunogen information

Gene ID:

8605

Uniprot

Q9UP65

Synonyms:

PLA2G4C; CPLA2-gamma

Antibody Information

Recommended dilutions:

WB 1:500 - 1:2000 IHC 1:50
- 1:200 IF 1:50 - 1:200

Source:

Rabbit

Isotype:

IgG

Purification:

Affinity purification

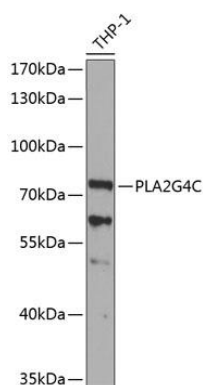
Immunogen:

Recombinant fusion protein containing a sequence corresponding to amino acids 1-189 of human PLA2G4C (NP_003697.2).

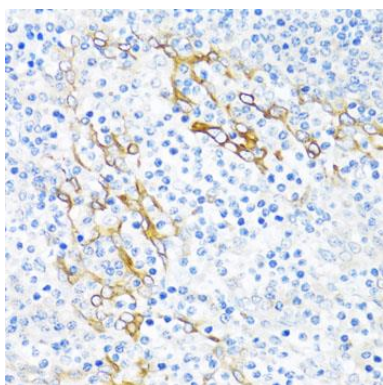
Storage:

Store at -20°C. Avoid freeze / thaw cycles. Buffer: PBS with 0.02% sodium azide, 50% glycerol, pH7.3.

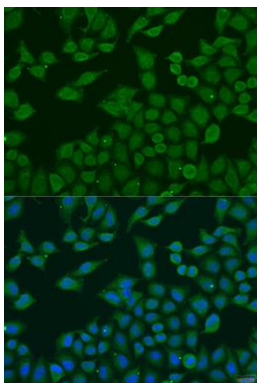
Product Images



Western blot analysis of extracts of THP-1 cells, using PLA2G4C antibody (CAB7753) at 1:1000 dilution. Secondary antibody: HRP Goat Anti-Rabbit IgG (H+L) (CABS014) at 1:10000 dilution. Lysates/proteins: 25ug per lane. Blocking buffer: 3% nonfat dry milk in TBST. Detection: ECL Basic Kit (CABM00020). Exposure time: 90s.



Immunohistochemistry of paraffin-embedded human tonsil using PLA2G4C antibody (CAB7753) at dilution of 1:100 (40x lens).



Immunofluorescence analysis of U2OS cells using PLA2G4C antibody (CAB7753) at dilution of 1:100. Blue: DAPI for nuclear staining.