

NAT8 Rabbit Polyclonal Antibody



CAB7759

Product Information

Size:

20uL, 50uL, 100uL, 200uL

Observed MW:

26kDa

Calculated MW:

25kDa

Applications:

WB IHC

Reactivity:

Human, Mouse, Rat

Protein Background

This gene, isolated using the differential display method to detect tissue-specific genes, is specifically expressed in kidney and liver. The encoded protein shows amino acid sequence similarity to N-acetyltransferases. A similar protein in *Xenopus* affects cell adhesion and gastrulation movements, and may be localized in the secretory pathway. A highly similar paralog is found in a cluster with this gene.

Immunogen information

Gene ID:

9027

Uniprot

Q9UHE5

Synonyms:

NAT8; ATase2; CCNAT; CML1; GLA; Hcml1; TSC501; TSC510

Antibody Information

Recommended dilutions:

WB 1:500 - 1:2000 IHC 1:50
- 1:100

Source:

Rabbit

Isotype:

IgG

Purification:

Affinity purification

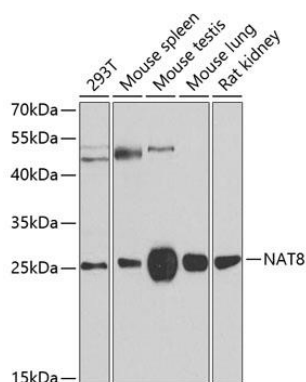
Immunogen:

Recombinant protein of human NAT8

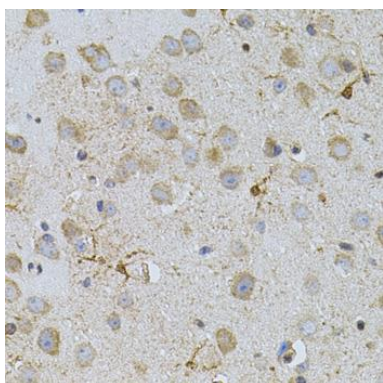
Storage:

Store at -20°C. Avoid freeze / thaw cycles. Buffer: PBS with 0.02% sodium azide, 50% glycerol, pH7.3.

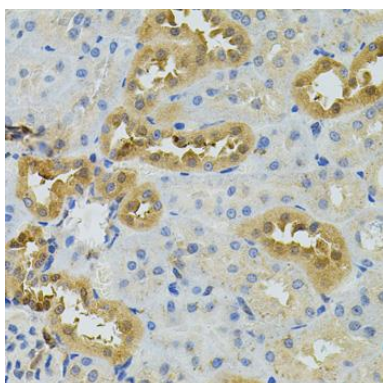
Product Images



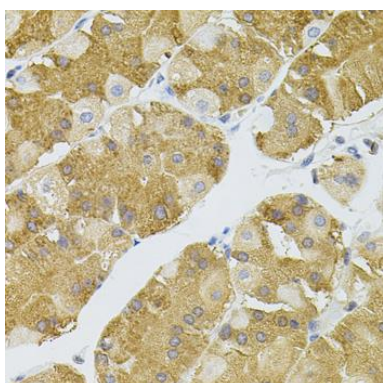
Western blot analysis of extracts of various cell lines, using NAT8 antibody (CAB7759) at 1:500 dilution. Secondary antibody: HRP Goat Anti-Rabbit IgG (H+L) (CABS014) at 1:10000 dilution. Lysates/proteins: 25ug per lane. Blocking buffer: 3% nonfat dry milk in TBST. Detection: ECL Basic Kit (CABM00020). Exposure time: 90s.



Immunohistochemistry of paraffin-embedded mouse brain using NAT8 antibody (CAB7759) (40x lens).



Immunohistochemistry of paraffin-embedded rat kidney using NAT8 antibody (CAB7759) (40x lens).



Immunohistochemistry of paraffin-embedded human stomach using NAT8 antibody (CAB7759) (40x lens).