

PDE4DIP Rabbit Polyclonal Antibody



CAB7765

Product Information

Size:

20uL, 50uL, 100uL, 200uL

Observed MW:

265kDa

Calculated MW:

20-36kDa/112-128kDa/254-267kDa

Applications:

WB IHC

Reactivity:

Human, Mouse, Rat

Antibody Information

Recommended dilutions:

WB 1:500 - 1:2000 IHC 1:50 - 1:200

Source:

Rabbit

Isotype:

IgG

Purification:

Affinity purification

Protein Background

The protein encoded by this gene serves to anchor phosphodiesterase 4D to the Golgi/centrosome region of the cell. Defects in this gene may be a cause of myeloproliferative disorder (MBD) associated with eosinophilia. Several transcript variants encoding different isoforms have been found for this gene.

Immunogen information

Gene ID:

9659

Uniprot

Q5VU43

Synonyms:

PDE4DIP; CMYA2; MMGL

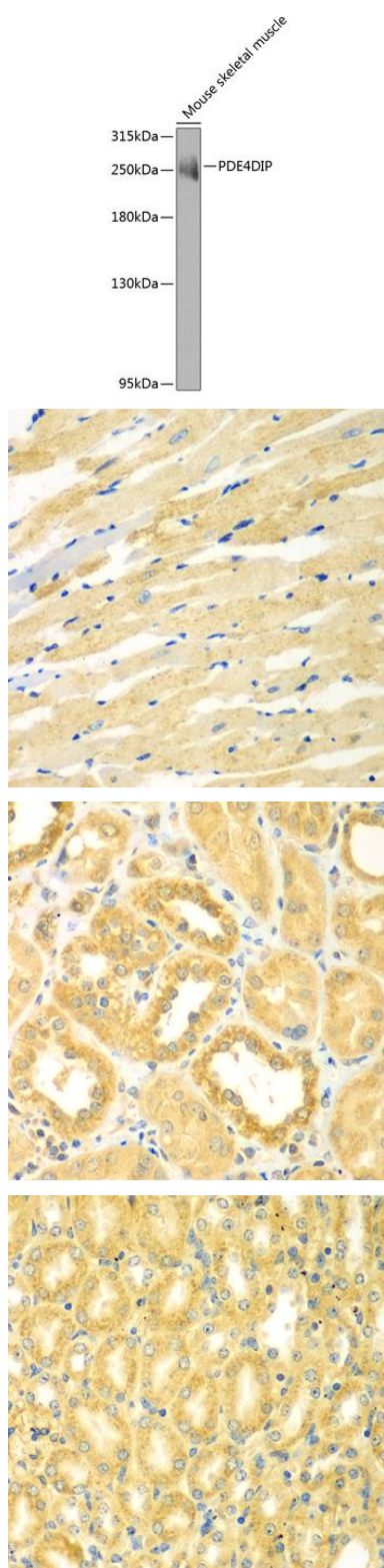
Immunogen:

Recombinant fusion protein containing a sequence corresponding to amino acids 1-310 of human PDE4DIP (NP_071754.3).

Storage:

Store at -20°C. Avoid freeze / thaw cycles. Buffer: PBS with 0.02% sodium azide, 50% glycerol, pH7.3.

Product Images



Western blot analysis of extracts of mouse skeletal muscle, using PDE4DIP antibody (CAB7765) at 1:1000 dilution. Secondary antibody: HRP Goat Anti-Rabbit IgG (H+L) (CABS014) at 1:10000 dilution. Lysates/proteins: 25ug per lane. Blocking buffer: 3% nonfat dry milk in TBST. Detection: ECL Enhanced Kit (CABM00021). Exposure time: 60s.

Immunohistochemistry of paraffin-embedded rat heart using PDE4DIP antibody (CAB7765) at dilution of 1:100 (40x lens).

Immunohistochemistry of paraffin-embedded human kidney using PDE4DIP antibody (CAB7765) at dilution of 1:100 (40x lens).

Immunohistochemistry of paraffin-embedded mouse kidney using PDE4DIP antibody (CAB7765) at dilution of 1:100 (40x lens).