

ZFYVE16 Rabbit Polyclonal Antibody



CAB7766

Product Information

Size:

20uL, 50uL, 100uL, 200uL

Observed MW:

100kDa

Calculated MW:

88kDa/168kDa

Applications:

WB IHC IF

Reactivity:

Human, Mouse

Protein Background

This gene encodes an endosomal protein that belongs to the FYVE zinc finger family of proteins. The encoded protein is thought to regulate membrane trafficking in the endosome. This protein functions as a scaffold protein in the transforming growth factor-beta signaling pathway and is involved in positive and negative feedback regulation of the bone morphogenetic protein signaling pathway. Alternate splicing results in multiple transcript variants.

Immunogen information

Gene ID:

9765

Uniprot

Q7Z3T8

Synonyms:

ZFYVE16; PPP1R69

Antibody Information

Recommended dilutions:

WB 1:500 - 1:2000 IHC 1:50
- 1:200 IF 1:50 - 1:200

Source:

Rabbit

Isotype:

IgG

Purification:

Affinity purification

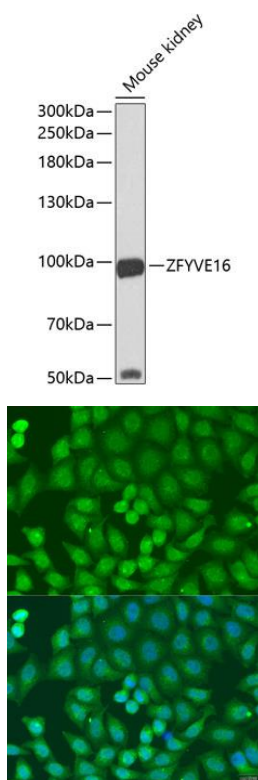
Immunogen:

Recombinant fusion protein containing a sequence corresponding to amino acids 1-280 of human ZFYVE16 (NP_055548.3).

Storage:

Store at -20°C. Avoid freeze / thaw cycles. Buffer: PBS with 0.02% sodium azide, 50% glycerol, pH7.3.

Product Images



Western blot analysis of extracts of mouse kidney, using ZFYVE16 antibody (CAB7766) at 1:1000 dilution. Secondary antibody: HRP Goat Anti-Rabbit IgG (H+L) (CABS014) at 1:10000 dilution. Lysates/proteins: 25ug per lane. Blocking buffer: 3% nonfat dry milk in TBST. Detection: ECL Basic Kit (CABM00020). Exposure time: 90s.

Immunofluorescence analysis of U2OS cells using ZFYVE16 antibody (CAB7766) at dilution of 1:100. Blue: DAPI for nuclear staining.