

[KO Validated] KDM5B Rabbit Polyclonal Antibody

CAB7772



Product Information

Size:

20uL, 50uL, 100uL, 200uL

Observed MW:

176kDa

Calculated MW:

175kDa/179kDa

Applications:

WB IF

Reactivity:

Human

Antibody Information

Recommended dilutions:

WB 1:500 - 1:2000 IF 1:50 - 1:200

Source:

Rabbit

Isotype:

IgG

Purification:

Affinity purification

Protein Background

This gene encodes a lysine-specific histone demethylase that belongs to the jumonji/ARID domain-containing family of histone demethylases. The encoded protein is capable of demethylating tri-, di- and monomethylated lysine 4 of histone H3. This protein plays a role in the transcriptional repression or certain tumor suppressor genes and is upregulated in certain cancer cells. This protein may also play a role in genome stability and DNA repair. Alternate splicing results in multiple transcript variants.

Immunogen information

Gene ID:

10765

Uniprot

Q9UGL1

Synonyms:

KDM5B; CT31; JARID1B; PLU-1; PLU1; PPP1R98; PUT1; RBBP2H1A; RBP2-H1

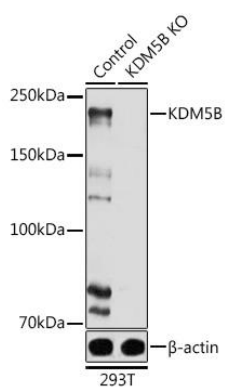
Immunogen:

Recombinant fusion protein containing a sequence corresponding to amino acids 784-883 of human KDM5B (NP_006609.3).

Storage:

Store at -20°C. Avoid freeze / thaw cycles. Buffer: PBS with 0.02% sodium azide, 50% glycerol, pH7.3.

Product Images



Western blot analysis of extracts of 293T cells, using KDM5B antibody (CAB7772) at 1:1000 dilution. Secondary antibody: HRP Goat Anti-Rabbit IgG (H+L) (CABS014) at 1:10000 dilution. Lysates/proteins: 25ug per lane. Blocking buffer: 3% nonfat dry milk in TBST. Detection: ECL Basic Kit (CABM00020). Exposure time: 10s.