

# AHCYL1 Rabbit Polyclonal Antibody



**CAB7773**

---

## Product Information

### Size:

20uL, 50uL, 100uL, 200uL

### Observed MW:

59kDa

### Calculated MW:

53kDa/58kDa

### Applications:

WB IHC

### Reactivity:

Human, Mouse, Rat

## Protein Background

The protein encoded by this gene interacts with inositol 1, 4, 5-trisphosphate receptor, type 1 and may be involved in the conversion of S-adenosyl-L-homocysteine to L-homocysteine and adenosine. Several transcript variants encoding two different isoforms have been found for this gene.

## Immunogen information

### Gene ID:

10768

### Uniprot

O43865

### Synonyms:

AHCYL1; DCAL; IRBIT; PPP1R78; PRO0233; XPVKONA

## Antibody Information

### Recommended dilutions:

WB 1:500 - 1:2000 IHC 1:50  
- 1:200

### Source:

Rabbit

### Isotype:

IgG

### Purification:

Affinity purification

### Immunogen:

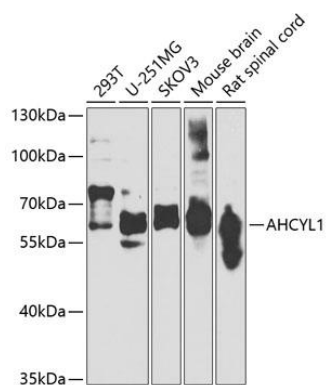
Recombinant fusion protein containing a sequence corresponding to amino acids 31-260 of human AHCYL1 (NP\_006612.2).

### Storage:

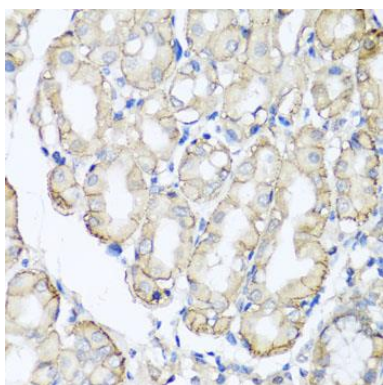
Store at -20°C. Avoid freeze / thaw cycles. Buffer: PBS with 0.02% sodium azide, 50% glycerol, pH7.3.

## Product Images

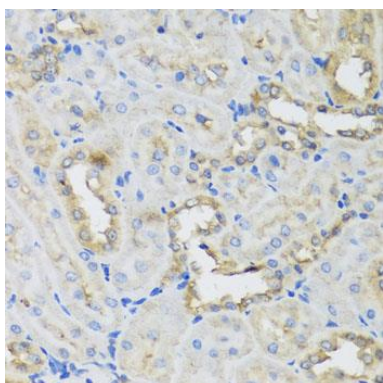
---



Western blot analysis of extracts of various cell lines, using AHCYL1 antibody (CAB7773) at 1:1000 dilution. Secondary antibody: HRP Goat Anti-Rabbit IgG (H+L) (CABS014) at 1:10000 dilution. Lysates/proteins: 25ug per lane. Blocking buffer: 3% nonfat dry milk in TBST. Detection: ECL Basic Kit (CABM00020). Exposure time: 90s.



Immunohistochemistry of paraffin-embedded human stomach using AHCYL1 antibody (CAB7773) at dilution of 1:100 (40x lens).



Immunohistochemistry of paraffin-embedded rat kidney using AHCYL1 antibody (CAB7773) at dilution of 1:100 (40x lens).