

CKAP4 Rabbit Polyclonal Antibody



CAB7777

Product Information

Size:

20uL, 50uL, 100uL, 200uL

Observed MW:

66kDa

Calculated MW:

66kDa

Applications:

WB IHC IF

Reactivity:

Human, Mouse, Rat

Antibody Information

Recommended dilutions:

WB 1:500 - 1:2000 IHC 1:50
- 1:100 IF 1:50 - 1:100

Source:

Rabbit

Isotype:

IgG

Purification:

Affinity purification

Protein Background

Immunogen information

Gene ID:

10970

Uniprot

Q07065

Synonyms:

CKAP4; CLIMP-63; ERGIC-63; p63

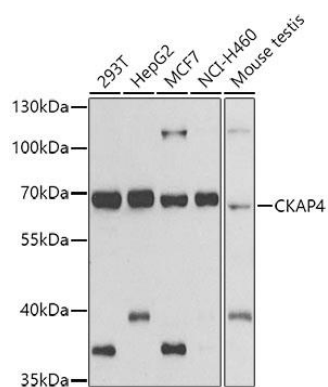
Immunogen:

A synthetic peptide of human CKAP4

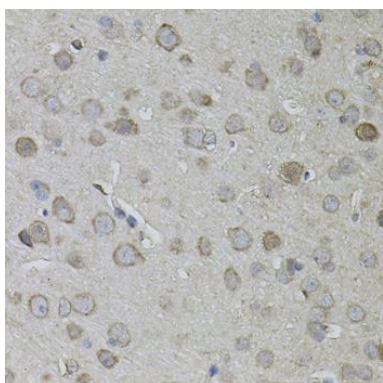
Storage:

Store at -20°C. Avoid freeze / thaw cycles. Buffer: PBS with 0.02% sodium azide, 50% glycerol, pH7.3.

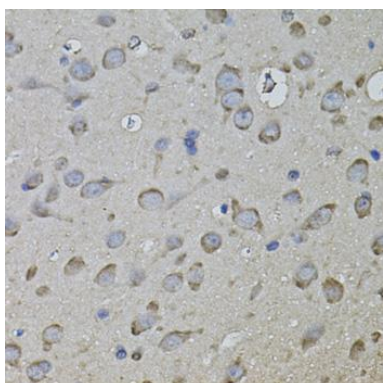
Product Images



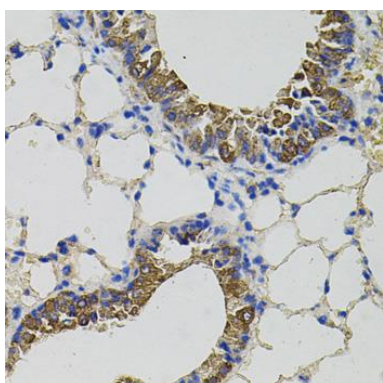
Western blot analysis of extracts of various cell lines, using CKAP4 antibody (CAB7777) at 1:500 dilution. Secondary antibody: HRP Goat Anti-Rabbit IgG (H+L) (CABS014) at 1:10000 dilution. Lysates/proteins: 25ug per lane. Blocking buffer: 3% nonfat dry milk in TBST. Detection: ECL Basic Kit (CABM00020). Exposure time: 90s.



Immunohistochemistry of paraffin-embedded mouse brain using CKAP4 antibody (CAB7777) (40x lens).



Immunohistochemistry of paraffin-embedded rat brain using CKAP4 antibody (CAB7777) (40x lens).



Immunohistochemistry of paraffin-embedded mouse lung using CKAP4 antibody (CAB7777) (40x lens).