

FAF1 Rabbit Polyclonal Antibody



CAB7779

Product Information

Size:

20uL, 50uL, 100uL, 200uL

Observed MW:

74kDa

Calculated MW:

56kDa/73kDa

Applications:

WB IHC IF

Reactivity:

Human, Mouse, Rat

Protein Background

Interaction of Fas ligand (TNFSF6) with the FAS antigen (TNFRSF6) mediates programmed cell death, also called apoptosis, in a number of organ systems. The protein encoded by this gene binds to FAS antigen and can initiate apoptosis or enhance apoptosis initiated through FAS antigen. Initiation of apoptosis by the protein encoded by this gene requires a ubiquitin-like domain but not the FAS-binding domain.

Immunogen information

Gene ID:

11124

Uniprot

Q9UNN5

Synonyms:

FAF1; CGI-03; HFAF1s; UBXD12; UBXN3A; hFAF1

Antibody Information

Recommended dilutions:

WB 1:500 - 1:2000 IHC

1:100 - 1:200 IF 1:50 -

1:200

Source:

Rabbit

Isotype:

IgG

Purification:

Affinity purification

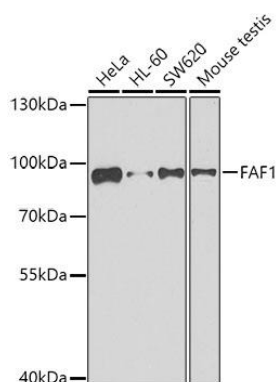
Immunogen:

A synthetic peptide of human FAF1

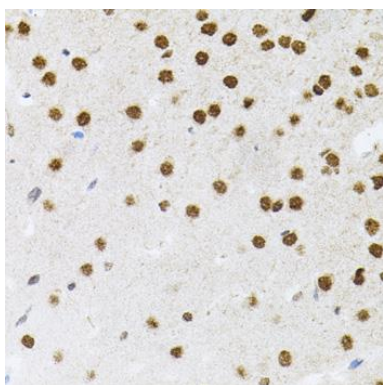
Storage:

Store at -20°C. Avoid freeze / thaw cycles. Buffer: PBS with 0.02% sodium azide, 50% glycerol, pH7.3.

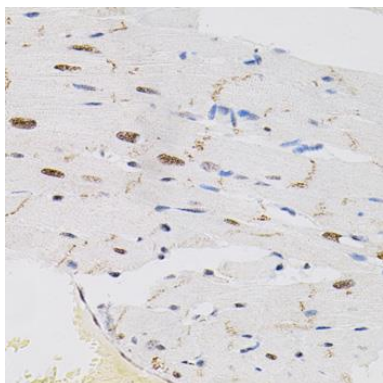
Product Images



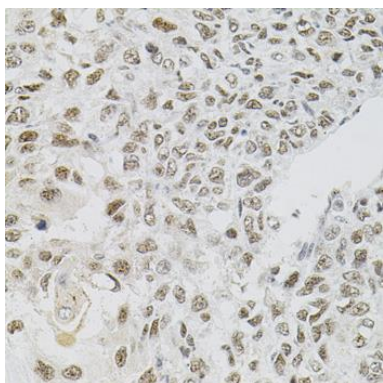
Western blot analysis of extracts of various cell lines, using FAF1 antibody (CAB7779) at 1:500 dilution. Secondary antibody: HRP Goat Anti-Rabbit IgG (H+L) (CABS014) at 1:10000 dilution. Lysates/proteins: 25ug per lane. Blocking buffer: 3% nonfat dry milk in TBST. Detection: ECL Enhanced Kit (CABM00021). Exposure time: 90s.



Immunohistochemistry of paraffin-embedded mouse brain using FAF1 antibody (CAB7779) (40x lens).



Immunohistochemistry of paraffin-embedded rat heart using FAF1 antibody (CAB7779) (40x lens).



Immunohistochemistry of paraffin-embedded human lung cancer using FAF1 antibody (CAB7779) (40x lens).