

# HARS2 Rabbit Polyclonal Antibody



CAB7785

## Product Information

### Size:

20uL, 50uL, 100uL, 200uL

### Observed MW:

50kDa

### Calculated MW:

54kDa/56kDa

### Applications:

WB IHC

### Reactivity:

Human, Mouse, Rat

## Antibody Information

### Recommended dilutions:

WB 1:500 - 1:2000 IHC 1:50  
- 1:200

### Source:

Rabbit

### Isotype:

IgG

### Purification:

Affinity purification

## Protein Background

Aminoacyl-tRNA synthetases are a class of enzymes that charge tRNAs with their cognate amino acids. The protein encoded by this gene is an enzyme belonging to the class II family of aminoacyl-tRNA synthetases. Functioning in the synthesis of histidyl-transfer RNA, the enzyme plays an accessory role in the regulation of protein biosynthesis. The gene is located in a head-to-head orientation with HARS on chromosome five, where the homologous genes likely share a bidirectional promoter. Mutations in this gene are associated with the pathogenesis of Perrault syndrome, which involves ovarian dysgenesis and sensorineural hearing loss. Alternative splicing results in multiple transcript variants of this gene.

## Immunogen information

### Gene ID:

23438

### Uniprot

P49590

### Synonyms:

HARS2; HARSL; HARSR; HO3; PRLTS2

### Immunogen:

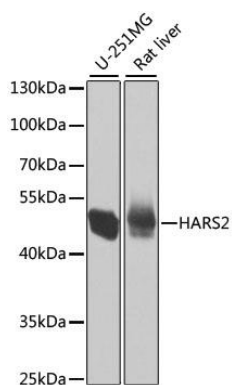
Recombinant fusion protein containing a sequence corresponding to amino acids 217-506 of human HARS2 (NP\_036340.1).

### Storage:

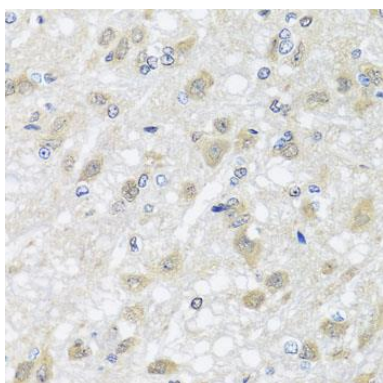
Store at -20°C. Avoid freeze / thaw cycles. Buffer: PBS with 0.02% sodium azide, 50% glycerol, pH7.3.

## Product Images

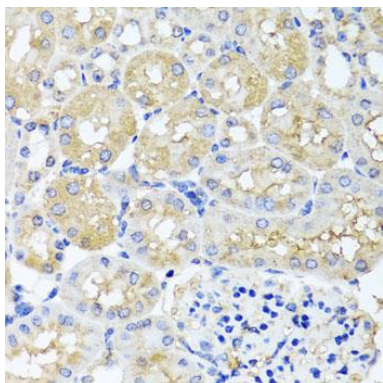
---



Western blot analysis of extracts of various cell lines, using HARS2 antibody (CAB7785) at 1:1000 dilution. Secondary antibody: HRP Goat Anti-Rabbit IgG (H+L) (CABS014) at 1:10000 dilution. Lysates/proteins: 25ug per lane. Blocking buffer: 3% nonfat dry milk in TBST. Detection: ECL Basic Kit (CABM00020). Exposure time: 5s.



Immunohistochemistry of paraffin-embedded rat brain using HARS2 antibody (CAB7785) at dilution of 1:100 (40x lens).



Immunohistochemistry of paraffin-embedded mouse kidney using HARS2 antibody (CAB7785) at dilution of 1:100 (40x lens).