

# [KO Validated] SUZ12 Rabbit Polyclonal Antibody



CAB7786

## Product Information

### Size:

20uL, 50uL, 100uL, 200uL

### Observed MW:

83kDa

### Calculated MW:

83kDa

### Applications:

WB IHC IF IP

### Reactivity:

Human, Mouse, Rat

## Protein Background

This zinc finger gene has been identified at the breakpoints of a recurrent chromosomal translocation reported in endometrial stromal sarcoma. Recombination of these breakpoints results in the fusion of this gene and JAZF1. The protein encoded by this gene contains a zinc finger domain in the C terminus of the coding region.

## Immunogen information

### Gene ID:

23512

### Uniprot

Q15022

### Synonyms:

SUZ12; CHET9; JAZ1

## Antibody Information

### Recommended dilutions:

WB 1:500 - 1:2000 IHC 1:50

- 1:200 IF 1:50 - 1:100 IP

1:50 - 1:100

### Source:

Rabbit

### Immunogen:

Recombinant fusion protein containing a sequence corresponding to amino acids 470-739 of human SUZ12 (NP\_056170.2).

### Storage:

Store at -20°C. Avoid freeze / thaw cycles. Buffer: PBS with 0.02% sodium azide, 50% glycerol, pH7.3.

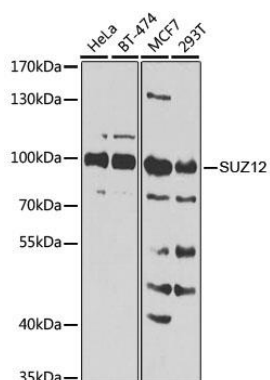
### Isotype:

IgG

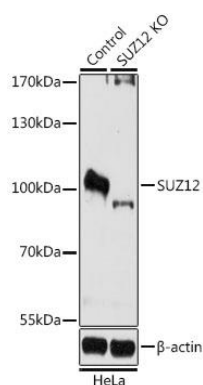
### Purification:

Affinity purification

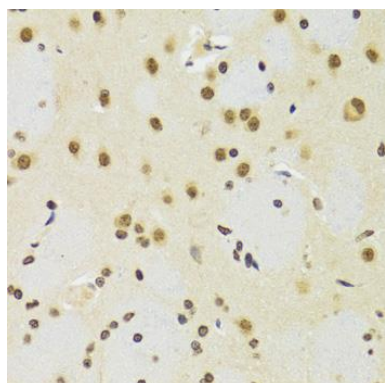
## Product Images



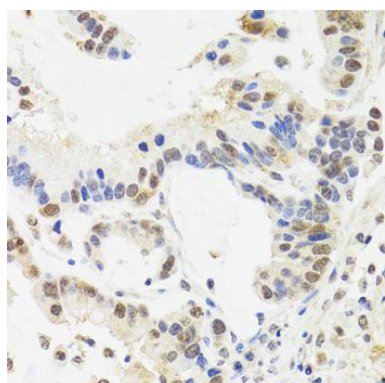
Western blot analysis of extracts of various cell lines, using SUZ12 Antibody (CAB7786) at 1:1000 dilution. Secondary antibody: HRP Goat Anti-Rabbit IgG (H+L) (CABS014) at 1:10000 dilution. Lysates/proteins: 25ug per lane. Blocking buffer: 3% nonfat dry milk in TBST. Detection: ECL Basic Kit (CABM00020). Exposure time: 90s.



Western blot analysis of extracts from normal (control) and SUZ12 knockout (KO) HeLa cells, using SUZ12 antibody (CAB7786) at 1:1000 dilution. Secondary antibody: HRP Goat Anti-Rabbit IgG (H+L) (CABS014) at 1:10000 dilution. Lysates/proteins: 25ug per lane. Blocking buffer: 3% nonfat dry milk in TBST. Detection: ECL Basic Kit (CABM00020). Exposure time: 90s.



Immunohistochemistry of paraffin-embedded rat brain using SUZ12 antibody (CAB7786) at dilution of 1:100 (40x lens).



Immunohistochemistry of paraffin-embedded human gastric cancer using SUZ12 antibody (CAB7786) at dilution of 1:100 (40x lens).