

MLH3 Rabbit Polyclonal Antibody



CAB7796

Product Information

Size:

20uL, 50uL, 100uL, 200uL

Observed MW:

164kDa

Calculated MW:

161kDa/163kDa

Applications:

WB IF

Reactivity:

Human

Antibody Information

Recommended dilutions:

WB 1:500 - 1:2000 IF 1:50 - 1:200

Source:

Rabbit

Isotype:

IgG

Purification:

Affinity purification

Protein Background

This gene is a member of the MutL-homolog (MLH) family of DNA mismatch repair (MMR) genes. MLH genes are implicated in maintaining genomic integrity during DNA replication and after meiotic recombination. The protein encoded by this gene functions as a heterodimer with other family members. Somatic mutations in this gene frequently occur in tumors exhibiting microsatellite instability, and germline mutations have been linked to hereditary nonpolyposis colorectal cancer type 7 (HNPCC7). Several alternatively spliced transcript variants have been identified, but the full-length nature of only two transcript variants has been determined.

Immunogen information

Gene ID:

27030

Uniprot

Q9UHC1

Synonyms:

MLH3; HNPCC7

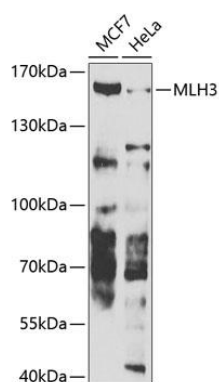
Immunogen:

Recombinant fusion protein containing a sequence corresponding to amino acids 1180-1429 of human MLH3 (NP_055196.2).

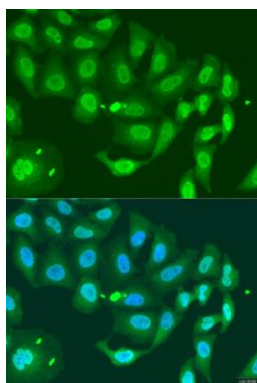
Storage:

Store at -20°C. Avoid freeze / thaw cycles. Buffer: PBS with 0.02% sodium azide, 50% glycerol, pH7.3.

Product Images



Western blot analysis of extracts of various cell lines, using MLH3 antibody (CAB7796) at 1:1000 dilution. Secondary antibody: HRP Goat Anti-Rabbit IgG (H+L) (CABS014) at 1:10000 dilution. Lysates/proteins: 25ug per lane. Blocking buffer: 3% nonfat dry milk in TBST. Detection: ECL Basic Kit (CABM00020). Exposure time: 90s.



Immunofluorescence analysis of U2OS cells using MLH3 antibody (CAB7796) at dilution of 1:100. Blue: DAPI for nuclear staining.