

SCG3 Rabbit Polyclonal Antibody



CAB7799

Product Information

Size:

20uL, 50uL, 100uL, 200uL

Observed MW:

53kDa

Calculated MW:

26kDa/53kDa

Applications:

WB IHC

Reactivity:

Human, Mouse, Rat

Protein Background

The protein encoded by this gene is a member of the chromogranin/secretogranin family of neuroendocrine secretory proteins. Granins may serve as precursors for biologically active peptides. Some granins have been shown to function as helper proteins in sorting and proteolytic processing of prohormones; however, the function of this protein is unknown. Two transcript variants encoding different isoforms have been found for this gene.

Immunogen information

Gene ID:

29106

Uniprot

Q8WXD2

Synonyms:

SCG3; SGIII

Antibody Information

Recommended dilutions:

WB 1:500 - 1:2000 IHC 1:50
- 1:200

Source:

Rabbit

Isotype:

IgG

Purification:

Affinity purification

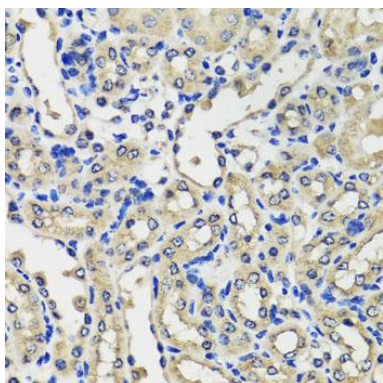
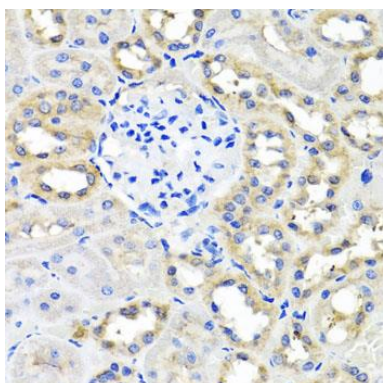
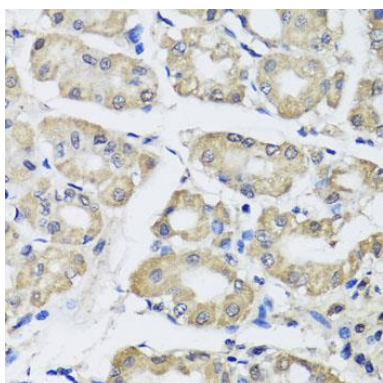
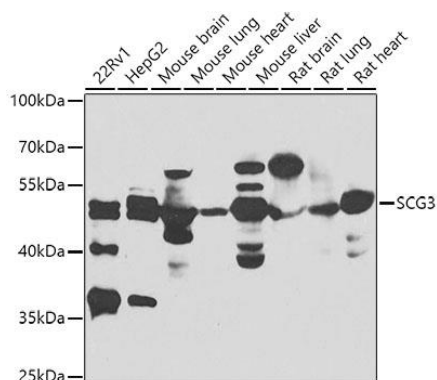
Immunogen:

Recombinant fusion protein containing a sequence corresponding to amino acids 199-468 of human SCG3 (NP_037375.2).

Storage:

Store at -20°C. Avoid freeze / thaw cycles. Buffer: PBS with 0.02% sodium azide, 50% glycerol, pH7.3.

Product Images



Western blot analysis of extracts of various cell lines, using SCG3 antibody (CAB7799) at 1:1000 dilution. Secondary antibody: HRP Goat Anti-Rabbit IgG (H+L) (CABS014) at 1:10000 dilution. Lysates/proteins: 25ug per lane. Blocking buffer: 3% nonfat dry milk in TBST.

Immunohistochemistry of paraffin-embedded human stomach using SCG3 antibody (CAB7799) at dilution of 1:100 (40x lens).

Immunohistochemistry of paraffin-embedded rat kidney using SCG3 antibody (CAB7799) at dilution of 1:100 (40x lens).

Immunohistochemistry of paraffin-embedded mouse kidney using SCG3 antibody (CAB7799) at dilution of 1:100 (40x lens).