

# SLC22A11 Rabbit Polyclonal Antibody



CAB7816

## Product Information

### Size:

20uL, 50uL, 100uL, 200uL

### Observed MW:

75kDa

### Calculated MW:

48kDa/59kDa

### Applications:

WB IF

### Reactivity:

Human, Mouse, Rat

## Protein Background

The protein encoded by this gene is involved in the sodium-independent transport and excretion of organic anions, some of which are potentially toxic. The encoded protein is an integral membrane protein and is found mainly in the kidney and in the placenta, where it may act to prevent potentially harmful organic anions from reaching the fetus. Alternative splicing results in multiple transcript variants.

## Immunogen information

### Gene ID:

55867

### Uniprot

Q9NSA0

### Synonyms:

SLC22A11; OAT4; hOAT4

## Antibody Information

### Recommended dilutions:

WB 1:500 - 1:2000 IF 1:50 - 1:100

### Source:

Rabbit

### Isotype:

IgG

### Purification:

Affinity purification

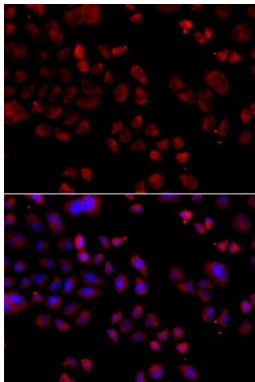
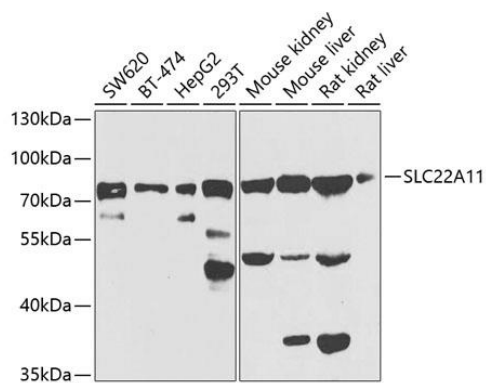
### Immunogen:

Recombinant fusion protein containing a sequence corresponding to amino acids 40-150 of human SLC22A11 (NP\_060954.1).

### Storage:

Store at -20°C. Avoid freeze / thaw cycles. Buffer: PBS with 0.02% sodium azide, 50% glycerol, pH7.3.

## Product Images



Western blot analysis of extracts of various cell lines, using SLC22A11 antibody (CAB7816) at 1:1000 dilution. Secondary antibody: HRP Goat Anti-Rabbit IgG (H+L) (CABS014) at 1:10000 dilution. Lysates/proteins: 25ug per lane. Blocking buffer: 3% nonfat dry milk in TBST. Detection: ECL Basic Kit (CABM00020). Exposure time: 30s.

Immunofluorescence analysis of A549 cells using SLC22A11 antibody (CAB7816). Blue: DAPI for nuclear staining.