

PAK6 Rabbit Polyclonal Antibody



CAB7821

Product Information

Size:

20uL, 50uL, 100uL, 200uL

Observed MW:

75kDa

Calculated MW:

69kDa/74kDa

Applications:

WB IHC

Reactivity:

Human, Mouse, Rat

Antibody Information

Recommended dilutions:

WB 1:500 - 1:2000 IHC 1:50
- 1:200

Source:

Rabbit

Isotype:

IgG

Purification:

Affinity purification

Protein Background

This gene encodes a member of a family of p21-stimulated serine/threonine protein kinases, which contain an amino-terminal Cdc42/Rac interactive binding (CRIB) domain and a carboxyl-terminal kinase domain. These kinases function in a number of cellular processes, including cytoskeleton rearrangement, apoptosis, and the mitogen-activated protein (MAP) kinase signaling pathway. The protein encoded by this gene interacts with androgen receptor (AR) and translocates to the nucleus, where it is involved in transcriptional regulation. Changes in expression of this gene have been linked to prostate cancer. Alternative splicing results in multiple transcript variants.

Immunogen information

Gene ID:

56924

Uniprot

Q9NQU5

Synonyms:

PAK6; PAK5

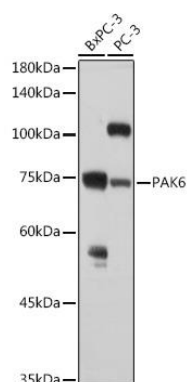
Immunogen:

Recombinant fusion protein containing a sequence corresponding to amino acids 1-270 of human PAK6 (NP_064553.1).

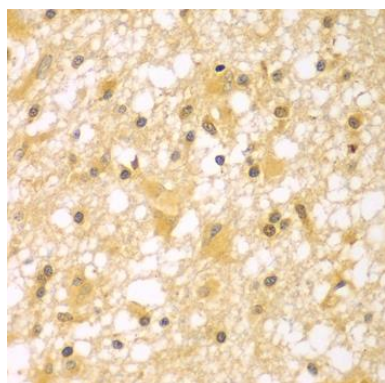
Storage:

Store at -20°C. Avoid freeze / thaw cycles. Buffer: PBS with 0.02% sodium azide, 50% glycerol, pH7.3.

Product Images



Western blot analysis of extracts of various cell lines, using PAK6 antibody (CAB7821) at 1:1000 dilution. Secondary antibody: HRP Goat Anti-Rabbit IgG (H+L) (CABS014) at 1:10000 dilution. Lysates/proteins: 25ug per lane. Blocking buffer: 3% nonfat dry milk in TBST. Detection: ECL Basic Kit (CABM00020). Exposure time: 90s.



Immunohistochemistry of paraffin-embedded human brain cancer using PAK6 antibody (CAB7821) at dilution of 1:100 (40x lens).