

REEP1 Rabbit Polyclonal Antibody



CAB7832

Product Information

Size:

20uL, 50uL, 100uL, 200uL

Observed MW:

22kDa

Calculated MW:

16kDa/18kDa/22kDa

Applications:

WB IF

Reactivity:

Human, Mouse, Rat

Protein Background

This gene encodes a mitochondrial protein that functions to enhance the cell surface expression of odorant receptors. Mutations in this gene cause spastic paraplegia autosomal dominant type 31, a neurodegenerative disorder. Alternative splicing results in multiple transcript variants.

Immunogen information

Gene ID:

65055

Uniprot

Q9H902

Synonyms:

REEP1; C2orf23; HMN5B; SPG31; Yip2a

Antibody Information

Recommended dilutions:

WB 1:500 - 1:2000 IF 1:50 - 1:200

Source:

Rabbit

Isotype:

IgG

Purification:

Affinity purification

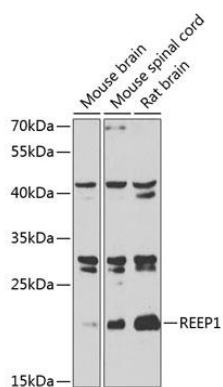
Immunogen:

Recombinant fusion protein containing a sequence corresponding to amino acids 101-201 of human REEP1 (NP_075063.1).

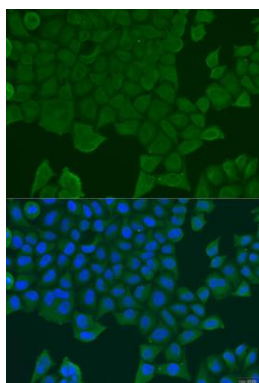
Storage:

Store at -20°C. Avoid freeze / thaw cycles. Buffer: PBS with 0.02% sodium azide, 50% glycerol, pH7.3.

Product Images



Western blot analysis of extracts of various cell lines, using REEP1 antibody (CAB7832) at 1:1000 dilution. Secondary antibody: HRP Goat Anti-Rabbit IgG (H+L) (CABS014) at 1:10000 dilution. Lysates/proteins: 25ug per lane. Blocking buffer: 3% nonfat dry milk in TBST. Detection: ECL Basic Kit (CABM00020). Exposure time: 90s.



Immunofluorescence analysis of U2OS cells using REEP1 antibody (CAB7832) at dilution of 1:100. Blue: DAPI for nuclear staining.